



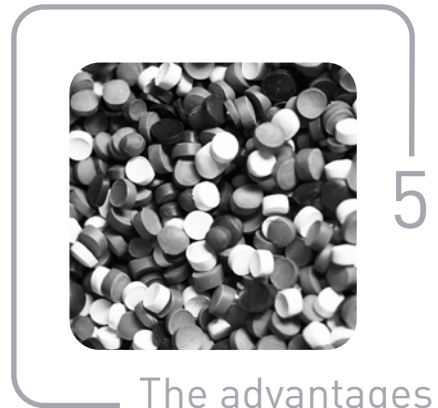
GEPLAST
Building

CLOSURES AND JOINERY

APRIL 2024



At the service of
your projects



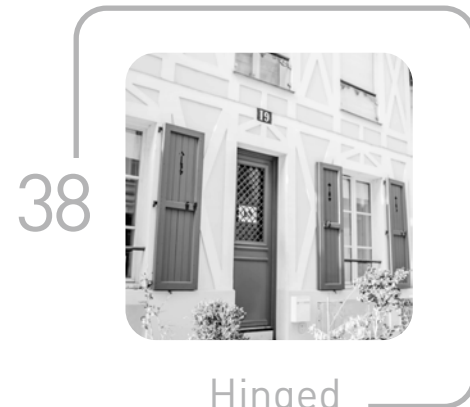
The advantages
of PVC



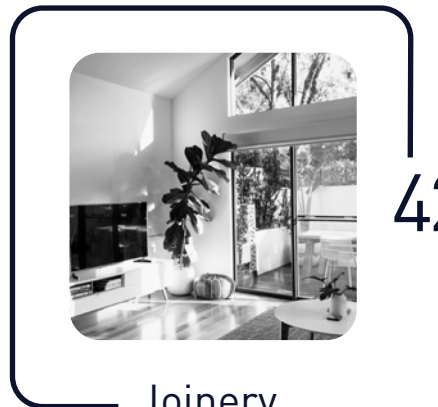
GEKO
Eco-designed by nature



Roller
shutters



Hinged
shutters



Joinery

At the service of your projects

For over 20 years, our team has been dedicated to your projects. Thanks to our expertise in the design and extrusion of profiles, we are able to offer you quality products, innovative and efficient solutions to meet all your expectations.

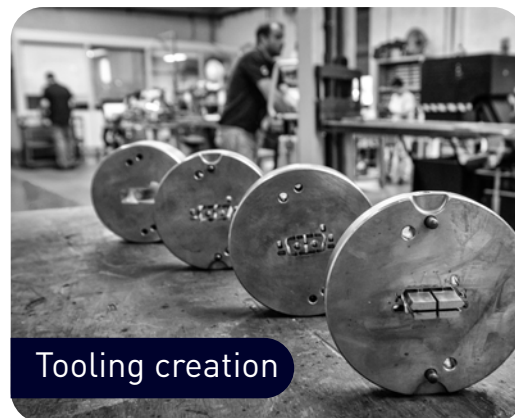
Geplast Building brings together the entire product range for building professionals in the field of joinery and closure.

Some of our PVC profiles are certified NF 126 by the CSTB. For more information please visit the website.

Our expertise



Design of the specifications



Tooling creation



Profile extrusion



Finishing plating, bending



Logistics



Recycling

The advantages of PVC

It contains less petroleum than other major thermoplastics and therefore has a much smaller carbon footprint. 100% recyclable, insulating and durable over time, PVC brings performance and resistance to our products.



THERMAL INSULATION

Both flexible and rigid, PVC has excellent insulating thermal and phonic properties.



MAINTENANCE

Very resistant, the PVC is not sensitive to pollution and external aggressions. Therefore, its maintenance is minimal, a little water and soap are enough.



FIRE REACTION

Composed of 57% chlorine from salt, PVC is hardly flammable and extinguishes itself once the fire is under control.



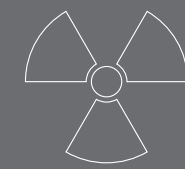
GOOD VALUE FOR MONEY

PVC is one of the most competitive materials on the market. Less expensive than wood and aluminum, the manufacture of PVC remains simple and its use is multiple.



DIMENSIONAL PROPERTIES

PVC has good dimensional stability and limited shrinkage due to its particularly resistant structure.



CHEMICAL RESISTANCE

With its excellent stability, PVC does not change when subjected to chemicals (salts, alcohols, grease, mineral oils...).

GEKO

Eco-designed by nature

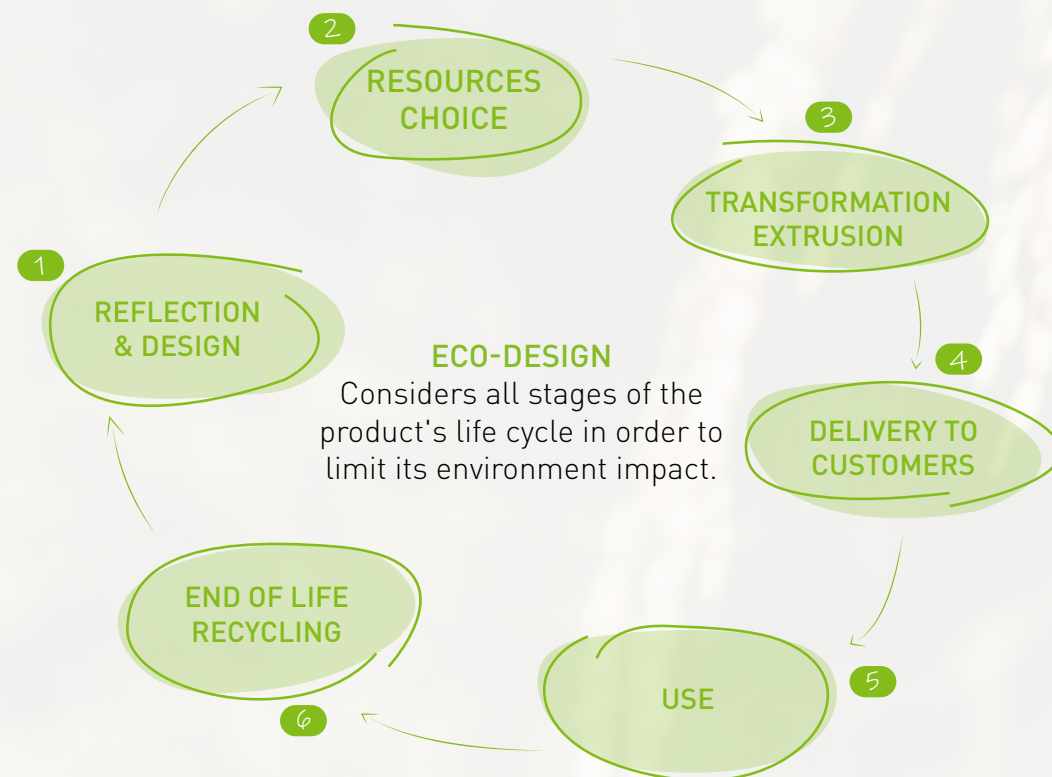
From the outset, the products in the GEKO range are part of a **decarbonized** and **sustainable life cycle**. As a matter of principle, and as far as possible, recycled materials will be used. **All offcuts are sorted, crushed and re-extruded.**

In addition to recycled material, GEKO uses alternative composites, from almost inexhaustible agricultural resources or bio-sourced materials.

In the manner of a "gecko", a type of lizard found in many parts of the world, the products in the range meet three basic requirements :

- **eco-responsibility** → nature
- **product quality** → agility
- **customized solutions** → great adaptability

A symbol of Geplast's commitment to environmental protection, GEKO is a new green experience in the history of building, simply because it is "Eco-designed by nature".



35%

of our processed materials are recycled materials, or 2441,11 tons tonnes a year.

REFLECTION & DESIGN

Reflection is the starting point for the design of a product. So we think about the composition of the products, the technical performances we want to obtain as well as the materials to use. The goal is to reduce our environmental footprint as much as possible.

RESOURCES CHOICE

- 100% recycled PVC, obtained through the management of our offcuts transformed into extruded co-products or from our local recycling partners.
- Use of bio-sourced materials such as Loryza®. Composed of 60% natural material (rice husk), it contains a much lower proportion of petroleum than virgin PVC.

At Geplast, 200 tons of recycled material are used per month to make our products, representing 30% of our total production.

For example, the proportion of recycled material in our new IrYs box is 98%, more than 80% in our window treatments and 60% for our products made of Loryza® material for the outdoor range.

TRANSFORMATION EXTRUSION

We favor co-extrusion* for the development of our GEKO products. The visible outside is made of 0.5 mm of virgin material to keep the technical aspects on the surface and the inside is made of recycled material.

The eco-design of our products also involves thinking about energy savings, for example by changing the cooling system of our machines. They will be more energy efficient.

**This extrusion process makes it possible to obtain a product combining two different formulations to form a single product.*

END OF LIFE RECYCLING

The lifespan of PVC products is 30 years. They are then recovered and recycled by waste treatment companies. Once this step is completed, Geplast takes back the recycled material to create new profiles and products.

DELIVERY TO CUSTOMERS

To limit our carbon footprint, our deliveries are optimized to avoid round trips.

USE

Our customers generate co-products;

REDUCING OUR FOOTPRINT

The eco-design of our products also involves reducing our carbon impact. Since 2018, Geplast's R&D department and the firm EVEA have been conducting a study to calculate the carbon costs of our recycled materials and measure the energy consumption of some of our extrusion lines. This questioning is formalised by the EPR, which was introduced in 2023 and which should over the years require manufacturers to carry out Life Cycle Analyses (LCAs) in order to produce Environmental and Health Declaration Sheets (EHSDSs) for each product, which will be published in the Inies database and checked by inspection bodies.





ROLLER SHUTTERS

- 10 | Our range of boxes
- 12 | FoKus®
- 16 | IrYs® GEKO
Economica per natura
- 20 | GVR.dL
- 22 | Reno City®
- 24 | GVR.r
- 26 | GVR.e
- 28 | Lame Bioclimatique® (*Bioclimatic slat*)
- 34 | Rails
 - > PVC
 - > ALU
- 36 | Practical guide

Our range of boxes

Geplast offers the widest range of roller shutter boxes on the market, in order to respond to all installation problems. Whether for new construction or renovation, whatever your joinery, you will find a solution adapted to your situation.



FoKus® INTERIOR WINDING BOX

Available in 3 sizes :
168, 205 and 235 mm

FoKus® perfectly meets the new energy standards : thermal, acoustic and aeraulic. These values are certified by PV of the CSTB and the FCBA.



IrYs® NEW HALF-LINTEL BOX

Made from 98% recycled material.

It meets the requirements of sustainable construction and the RE2020.

The first box on the market to obtain a technical opinion for window widths of up to 3.50 m.



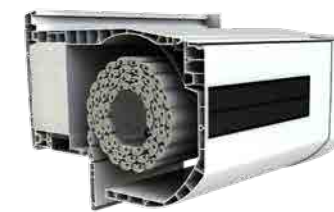
GVR.dL HALF-LINTEL BOX

Invisible box.
Compatible with all Swivelling Sunshades on the market.

56 dB in standard configuration (FCBA report).



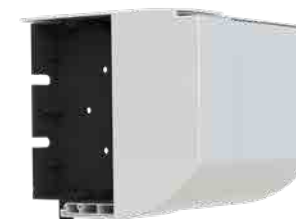
The technical specifications of each box are available in PDF format on request. Please contact our customer service.



Reno City® EXTERIOR RENOVATION BOX

Perfect for the renovation of your buildings.

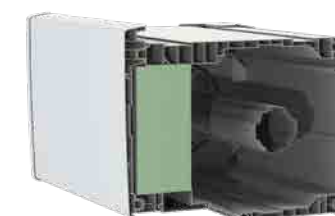
Ideal with solar motorization use.



GVR.r PVC EXTERIOR RENOVATION BOX

Access to the mechanism from the inside, ideal for collective housing.

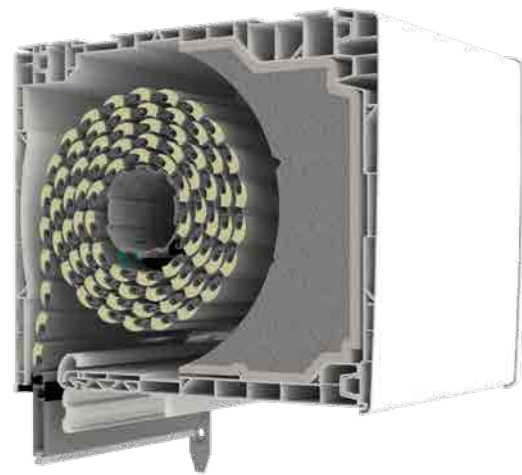
Preserves the intrinsic performance of the joinery.



GVR.e EXTERNAL WINDING BOX

Ideal for new generation buildings with thermal insulation from the outside.

Adaptation on all PVC, ALU and WOOD joineries.



FoKus®

INTERIOR WINDING BOX

FoKus® is available in 3 sizes : 168, 205 and 235 mm.



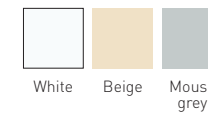
A TECHNICAL RESPONSE

The FoKus® box has several features. **It can be installed on all types of joinery** thanks to the patented universal adapter concept. Compatible with all maneuvers, it can be used with PVC or ALU aprons and rails

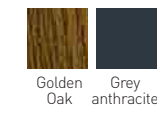
FoKus® is compatible with **the bioclimatic slat** and can also accommodate a **BSO (Solar shading)**. It also has the option of "Accessing the underside" to facilitate maintenance work from the inside.

Customizable thanks to its many available finishes (tinted, plaxed or aluminum plaxed).

COLORS OF THE PANELS MASS COLOURED



PLAXED



80+ plated film decors available upon request

ALU COATING (except trunk 235 mm)



FOKUS®
BOX IN VIDEO



ACERMI n°20/256/1488/1



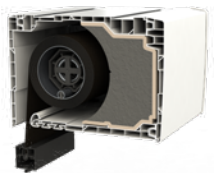
The FoKus® interior roller shutter box range combines all the requirements for tomorrow's buildings by reducing its overall impact on human health (solar gain management, perfect air tightness, maximum acoustic comfort) and on the environment (high thermal insulation and product recycling at the end of its life).

FoKus® reached **54 dB in standard configuration**.

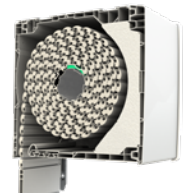
It thus perfectly meets the new energy standards: **thermal, acoustic and aeraulic**. These values are certified by the PV of the CSTB and the FCBA.

SOLAR PROTECTION

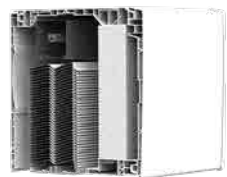
NEW



Fokus® ZIP
Blind screen



Fokus®
Bioclimatic slat



Fokus®
BSO blades

INSTALLATIONS



New installation



Renovation installation

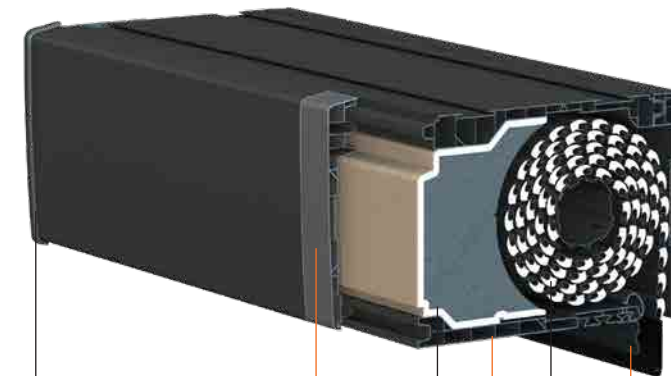


Installation as external
thermal insulation



Installation on timber-
frame house

FOKUS® 205 MM



ALU COATING

PVC box panels covered by aluminium sheet.

THERMO-ACOUSTIC COMPLEX

Patented, it combines acoustic attenuation while maintaining a high thermal level.

BRACKET / SLIDE

Facilitates maintenance or modernisation work.

UNIVERSAL ADAPTOR

Patented set of 4 interfaces and an underside to adapt to all joinery ranges.

BIOCLIMATIC SLAT - PVC OR ALU

Micro-perforated, it provides more than 4 times the daylight and ventilation of a standard slat.

OPTION : UNDER-FACE ACCESS

Provides easy and rapid access to all the interior of the box.

CERTIFIED PERFORMANCE

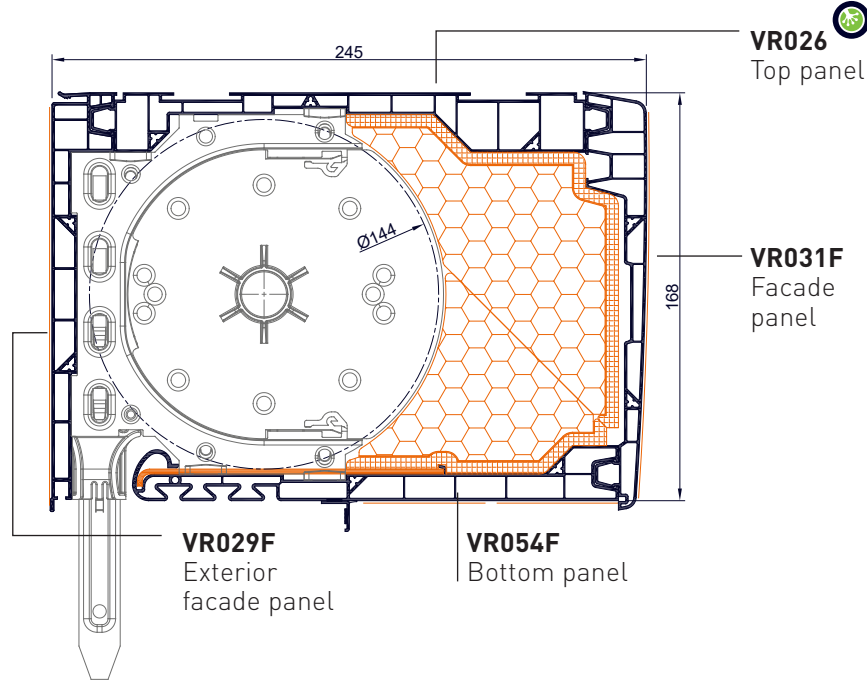
THERMAL : $U_c = 0.8 \text{ W/m}^2\cdot\text{K}$. as 100 mm fixed frame

ACOUSTIC : $D_{n,e,w} + C_{tr}$ up to 53 dB with heavy gauge bonding (FCBA report)

AIR FLOW : C^*4 (AT Value)



**PANELS
FOKUS® 168 MM**

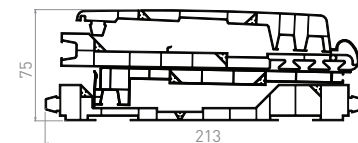


**PANEL KITS
168 MM**

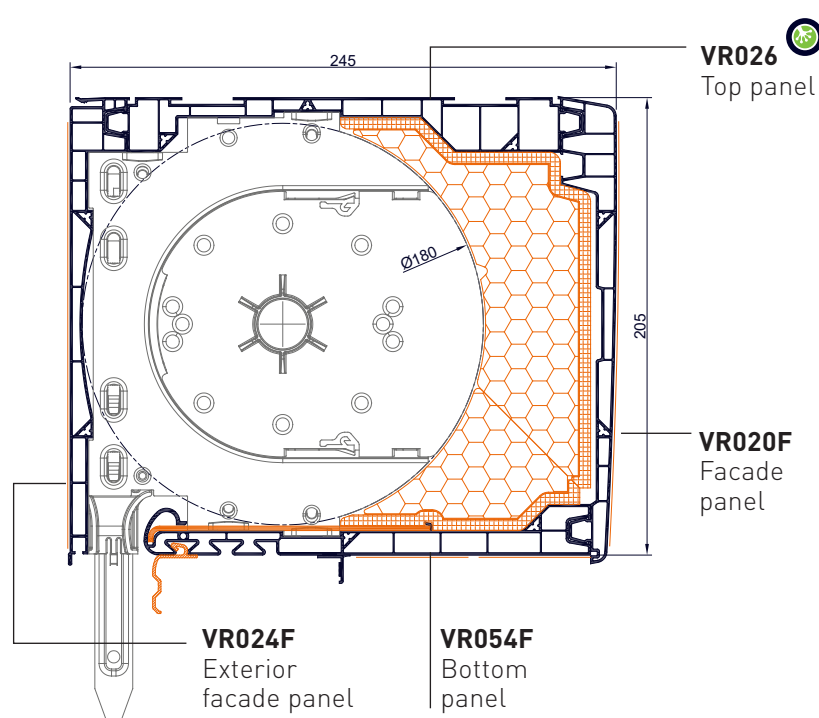
VRKI1C
4 panels kit :
VR026 + VR029F + VR031F + VR054F
1 kit / pack
18 kits / container



VRKI1CE
Two-colour 4 panels kit:
3 white PVC panels VR026
+ VR031F + VR054F
and coated exterior facade VR029
(standard colors available)
1 kit / pack
18 kits / container

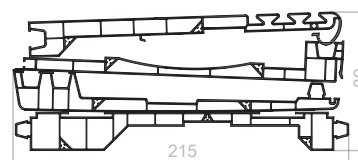


**PANELS
FOKUS® 205 MM**

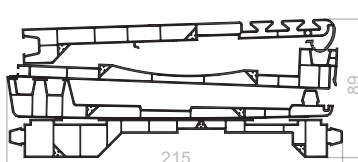


**PANEL KITS
205 MM**

VRKI2C
4 panels kit :
VR020F + VR024F + VR026 + VR054F
1 kit / pack
18 kits / container



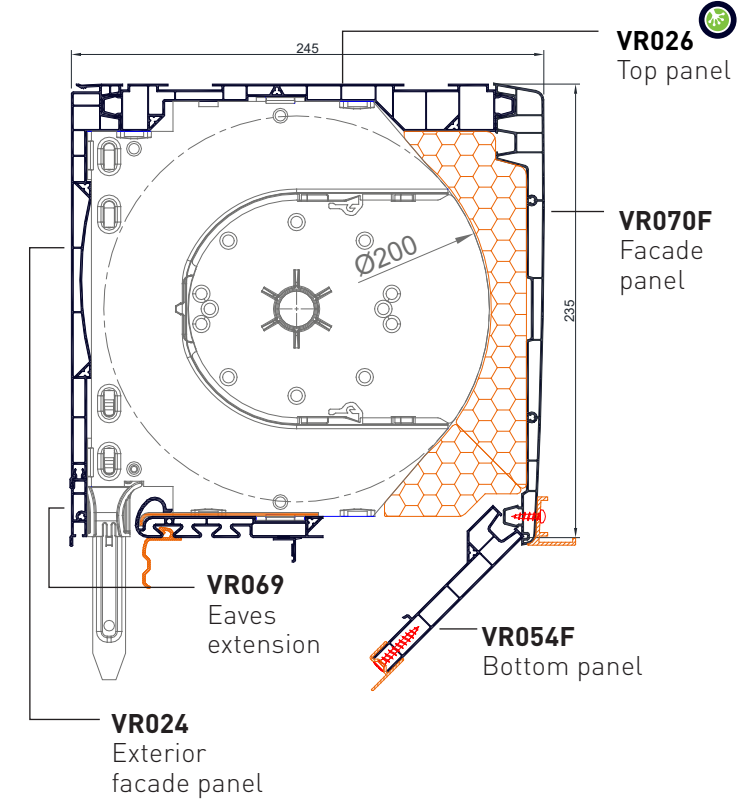
VRKI2CE
Two-colour 4 panels kit :
3 white PVC panels VR020F +
VR026 + VR054F
and coated exterior facade VR024
(standard colors available)
1 kit / pack
18 kits / container



PACK SIZES

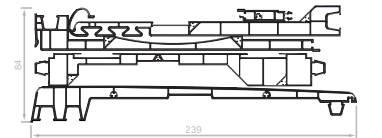
	VR020F	VR024F	VR026	VR029F	VR031F	VR054F
Bars of 6 ml / pack	4	4	4	4	4	4
Bars of 6 ml / container	72	90	74	120	108	96

PANELS FOKUS® 235 MM

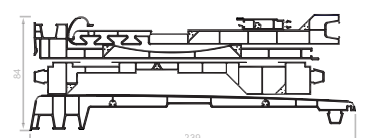


**PANEL KITS
235 MM**

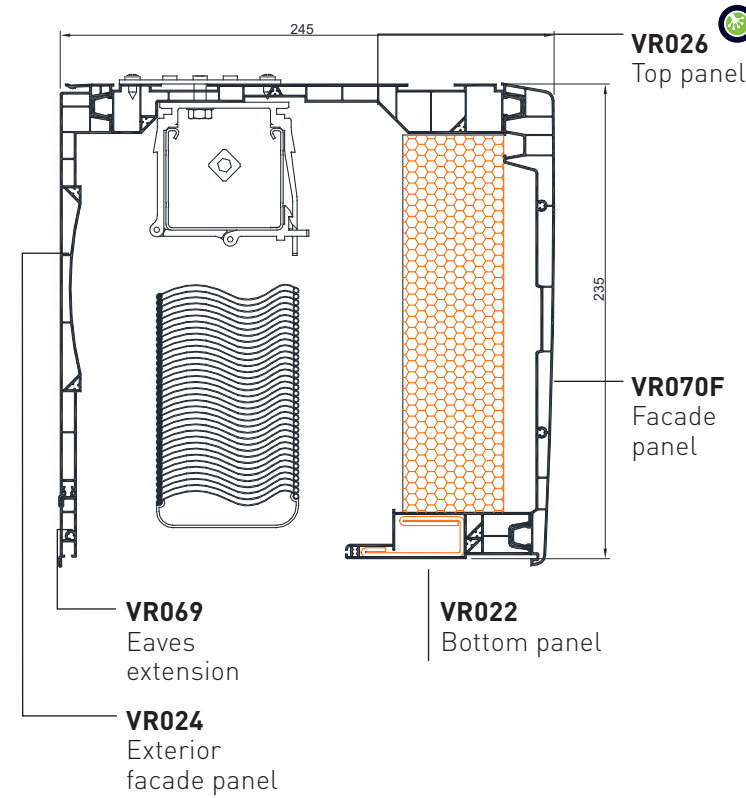
VRKI3C
5 panels kit :
VR024 + VR026 + VR054F + VR069 + VR070
1 kit / pack
16 kits / container



VRKI3CE
Two-colour 5 panels kit :
VR070F + VR026 + VR054F and coated
exterior facade VR024 and VR069
1 kit / pack
16 kits / container

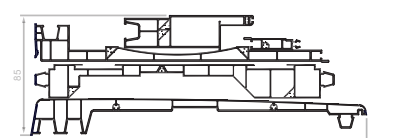


**PANELS FOKUS® 235 MM
AVEC BSO**



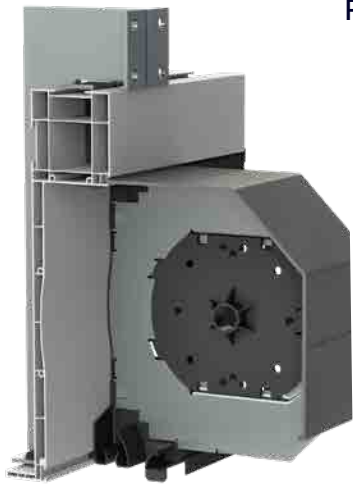
**VRKI3D - SWIVELLING SUNSHADE
INTEGRATION KIT VERSION**

5 panels kit :
VR022 + VR024 + VR026 + VR069 + VR070
1 kit / pack
16 kits / container



PACK SIZES

	VR022	VR024	VR026	VR054F	VR069	VR070F
Bars of 6 ml / pack	4	4	4	4	10	4
Bars of 6 ml / container	160	90	74	96	-	66



PATENTED SYSTEM



IrYs
n°6/22-2433_V1 - Published on 13/09/2022
End of validity on 31/08/2025

IrYs®

NEW HALF-LINTEL BOX

Designed to be part of a sustainable construction approach, the new IrYs half lintel box is made from **98% recycled material**. It therefore meets the challenges of the **RE2020** (lowcarbon construction) and offers genuine **thermal and acoustic insulation and airtightness performance** for the end user.

IRYS
BOX IN
VIDEO



CERTIFIED PERFORMANCE

THERMAL : $U_p = 0,64 \text{ W/m}^2 \cdot \text{K}$ as 120 mm fixed frame

ACOUSTIC :

$D_{n,e,w} + C_{tr}$ 56 dB in standard configuration,

$D_{n,e,w} + C_{tr}$ 59 dB with options

$D_{n,e,w} + C_{tr}$ 55 dB in standard configuration with the ventilation grid (PV CSTB)

AERAULIC :

AIR FLOW : **C*4** with winch and motor (PV CSTB)

WIND : **V*4** opening widths of 3.5 m with support lugs RF038 (PV CSTB)

1st roller shutter box on the market to obtain technical approval for window widths of up to 3.50 m

SOLAR PROTECTION

NEW



IrYs® ZIP
Blind screen

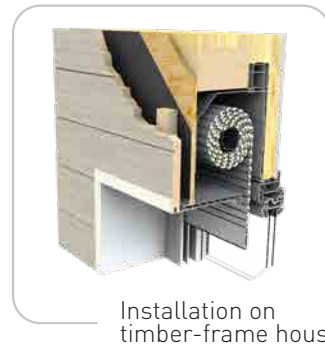


IrYs®
Bioclimatic slat

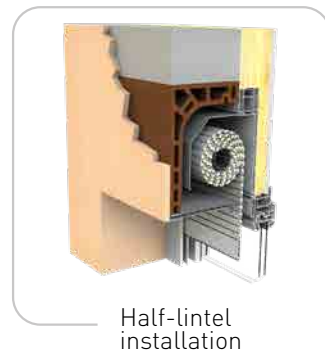


IrYs® BSO blades

INSTALLATIONS

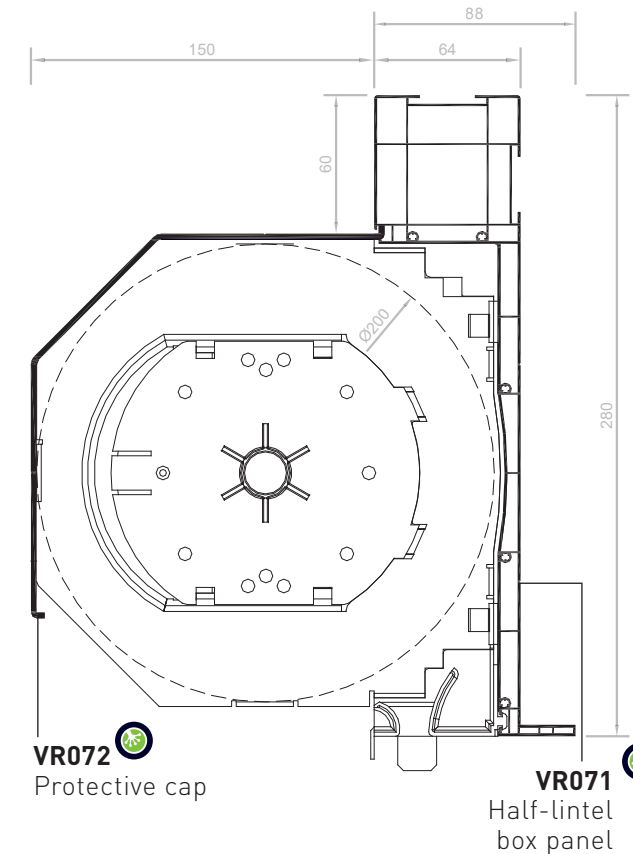


Installation on
timber-frame house

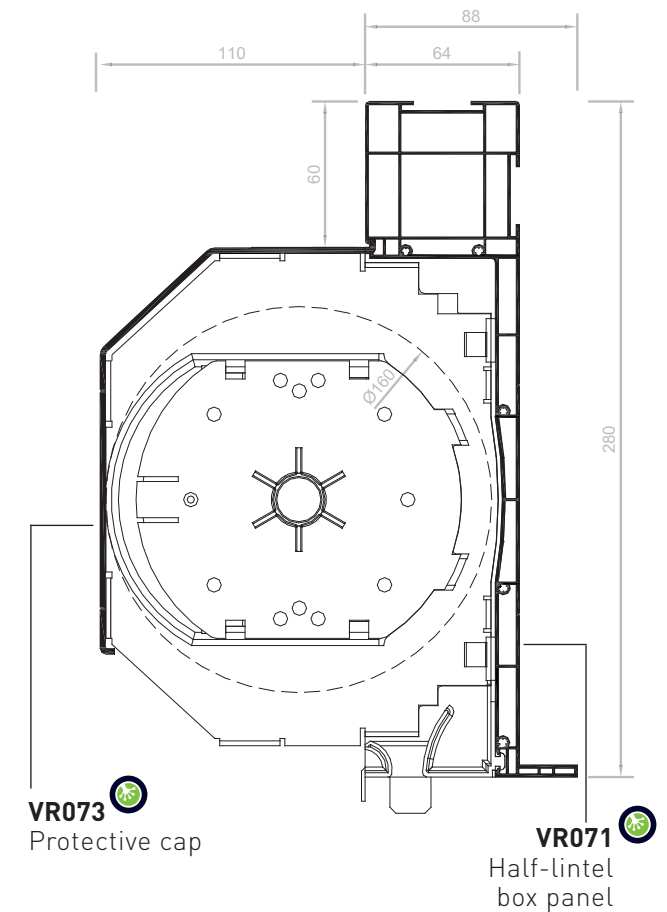


Half-lintel
installation

PANELS IRYS® (200 MM) FOR HALF LINTEL INSTALLATION



PANELS IRYS® (160 MM) FOR INSTALLATION ON TIMBERFRAME HOUSE AND EXTERIOR THERMAL INSULATION



A TECHNICAL RESPONSE

IrYs® is mainly suitable for two types of installation :

- Traditional masonry with maximised winding at $\varnothing 200$,
- Timber frame with maximised winding at $\varnothing 160$.

It is compatible with all types of solar protection : **bioclimatic slats**, long-span slats for **XXL bays** up to **3.50 m**, standard market slats, **BSO** and **insect screens** (better management of solar gain, avoids overheating in buildings in summer and considerably reduces the use of air conditioning).

The assembly of this patented box is fast and industrial:

- simple clipping of end caps, brackets and integration of tulips and brackets (no screws and no silicone),
- the support lugs system is easy to install, there is no need for steel reinforcement,
- after-sales service is facilitated by the removable drawers

PACK SIZES

	VR071	VR072	VR073
Bars of 6 ml / Pack	2	2	2
Bars of 6 ml / Container	30	100	150

COLORS OF UNDERSIDES "FLORÉAL"

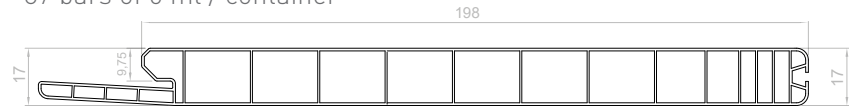
The "Floréal" colour is derived from the recycling of unused resources in production. The boards can therefore take on different shades.

NEW
MONOBLOCK UNDERSIDES

VR078
Underside panel 183 mm
5 bars of 6 ml / pack
87 bars of 6 ml / container



VR079
Underside panel 198 mm
5 bars of 6 ml / pack
87 bars of 6 ml / container



The new undersides are more robust thanks to their 17mm thickness.

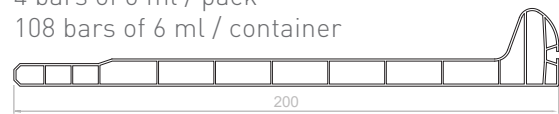
They feature an integrated rail-hiding spoiler to optimize inventory and logistics.

They fit all tunnel and 1/2-tunnel boxes.

To avoid warping, we recommend storing the undersides in a dark place, flat along the entire length of the profile.

UNDERSIDES 8MM

VR057
Underside panel 200 mm
4 bars of 6 ml / pack
108 bars of 6 ml / container



VR058
Underside panel 185 mm
4 bars of 6 ml / pack
108 bars of 6 ml / container

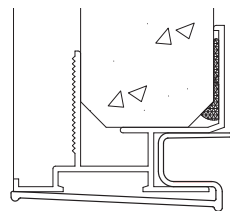
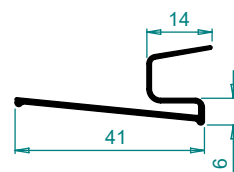


VR060
Underside panel 193 mm
4 bars of 6 ml / pack
108 bars of 6 ml / container



RAIL COVER
UNDERSIDES 8MM

VR061
Patented universal finishing profile
18 bars of 6 ml / pack

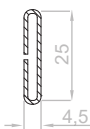


Patented universal concept

ACCESSOIRES

RF023
Steel underside stiffener
10 bars of 6 ml / pack

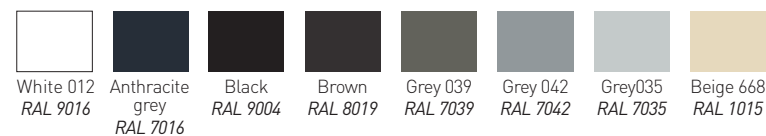
Significantly improves the inertia and deflection of the underside.



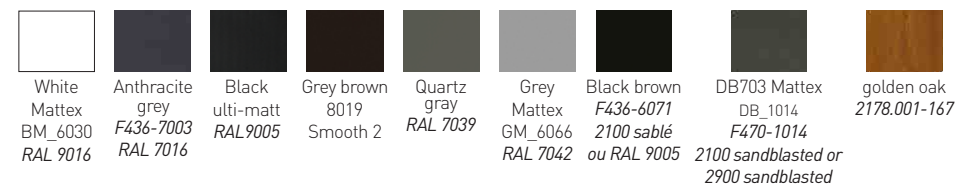
UNDERSIDES & RAIL COVER COLORS

A difference in finish between the underside and the rail cover may exist for dark mass-colored colors.

MASS COLOURED



PLAXED 80+ plated film decors available upon request



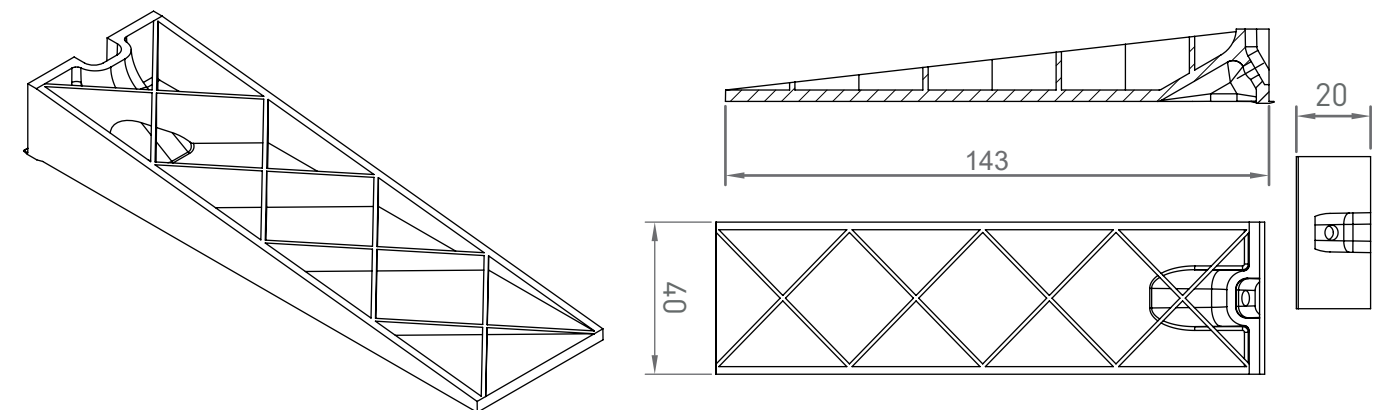
NEW
ANGLE BRACKET AC099
FOR UNDERSIDES

The new AC099 underside reinforcement bracket for tunnel and half-header boxes has been designed to eliminate sagging on long lengths. Compatible with our range of fascias and finishing profiles, it is screwed directly into the box (pre-drill if using non-self-drilling screws). Plus, AC099 is made from 100% recycled material.



Colors
Black

AC099_N0004
Reinforcement bracket
10 pieces / bag
100 pieces / box






TECHNICAL APPROVAL
TECHNIQUE
GVR.dL.
 n°6/16-2315_V1 - Published on 27/08/2021
 End of validity on 30/06/2025

GVR.dL

HALF-LINTEL BOX

Invisible box.
Compatible with all Swivelling Sunshades on the market.

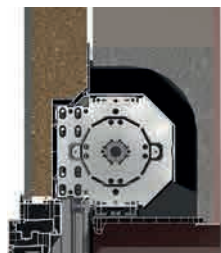
A TECHNICAL RESPONSE

Adaptable to all half-lintel boxes on the market, it works on linings from **100 to 200 mm**.

Available accessories :

- Panel extension
- Underside set with rail cover
- Stiffeners and accessories
- Blocks and adhesives

INSTALLATIONS



Half-lintel installation



Installation on timber-frame house



Half-lintel installation with Swivelling Sunshade

"FLOREAL" COLORS

The colour "Floreal" comes from the recycling of unused resources in production. The panels are available in different shades.

CERTIFIED PERFORMANCE

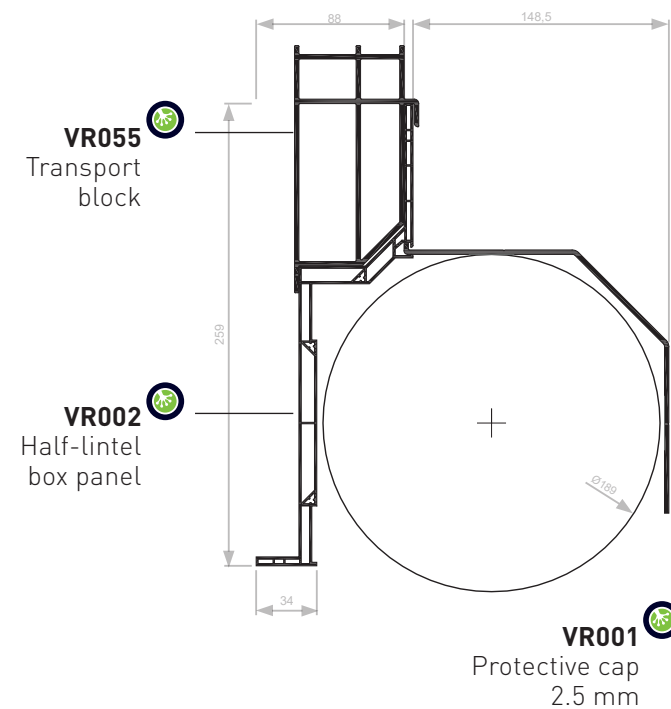
THERMAL : $U_c = 0.86W/m^2.K.$ as 120 mm fixed frame

ACOUSTIC : $D_{n,e,w} + C_{tr}$ up to 56 dB in standard configuration (FCBA report)

AIR FLOW : C^*4 (AT Value)

WIND : $V4^*$ with opening width up to 3 m (AT value)

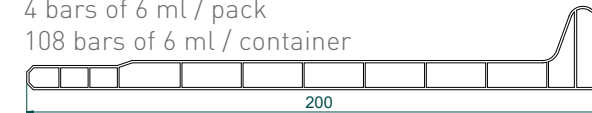
PANELS - GVR.DL



UNDERSIDES 8MM

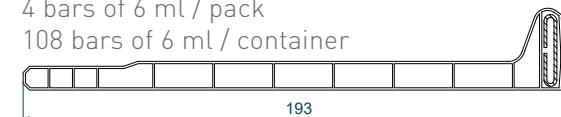
VR057

Underside panel 200 mm
4 bars of 6 ml / pack
108 bars of 6 ml / container



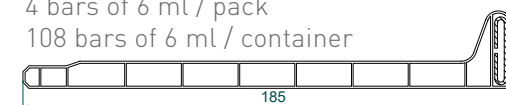
VR060

Underside panel 193 mm
4 bars of 6 ml / pack
108 bars of 6 ml / container



VR058

Underside panel 185 mm
4 bars of 6 ml / pack
108 bars of 6 ml / container



PACK SIZES

	VR001	VR002
Bars of 6 ml / Pack	3	3
Bars of 6 ml / Container	200	64
	VR055	
	50 units of 150 mm / cardboard box	

ACCESSORIES - GVR.DL

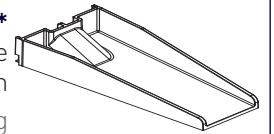
RF007
Load support bracket

50 bars of 6 ml / pack



AC017*

Load support wedge for 2 m width
10 pieces / bag
100 pieces / cardboard box

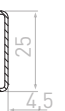


*Compatible with most ALU profiles of tunnel/half-tunnel boxes on the market

RF023

Steel underside stiffener

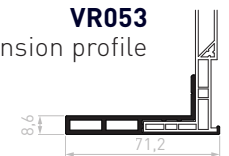
10 bars of 6 ml / pack



Significantly improves the inertia and deflection of the underside.

VR053

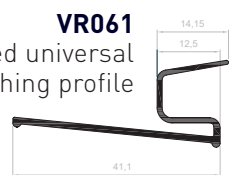
Extension profile



10 bars of 6 ml / pack
300 bars of 6 ml / container

VR061

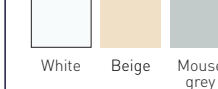
Patented universal finishing profile



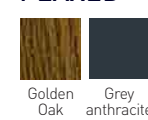
18 bars of 6 ml / pack

UNDERSIDES COLOURS

MASS COLOURED



PLAXED



80+ plated film decors available upon request

STORAGE RECOMMENDATION

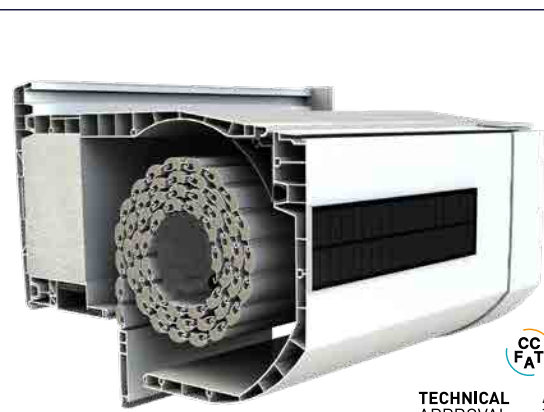
To avoid twisting, we recommend storing underside panels protected from the light with the entire length of the profile flat.

RELATED PRODUCTS

Our underside panels can be fitted with standard brush seals (5 mm support) or Stribo Flex sealing brush or strip brush (3.5 mm profile).
Suppliers: Schlegel, Sefna, Koti Tribollet...

CUSTOMISATION

The undersides are available as mass coloured (white, beige, grey and anthracite grey) and with a PVC or ALU coating. Depending on your need, our production department plaxed the selected face of the underside panel.



Reno City®

LET'S RENOVATE THE CITY OF TOMORROW

3 active patents on the box.
Ideal for the renovation of your buildings.



A TECHNICAL RESPONSE

Under technical approval, the Reno City is characterized as a compact box offering a **144 mm clear glazing**, while maintaining a maximum roll-up diameter of **170 mm**. Moreover, it has an **excellent thermal and acoustic insulation**.

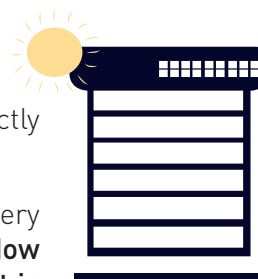
Equipped with an integrated ALU stiffener, it allows **the realization of large width boxes (3 ml)** with a plaxed finish.

Another advantage is **the integration of a drawer, which facilitates maintenance intervention**, and the patented clip-on system of the brackets, which allows the use of narrow slides. It also accepts all market maneuvers and is **ideal for solar motorization use**.

THE CHOICE OF THE SOLAR MOTORIZATION

Reliable and easy to install, the solar motorization has many advantages and is perfectly integrated into the Reno City.

Installed in the box, the solar motorization works with a sensor that charges the battery and powers the motor. With its integrated solar motorization, Reno City is **the only window box on the market** to offer **a completely independent window-cabinet installation that is disconnected** from the home's general electronic system.

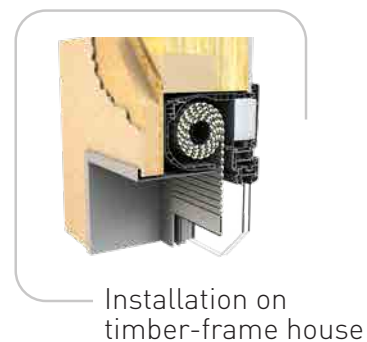
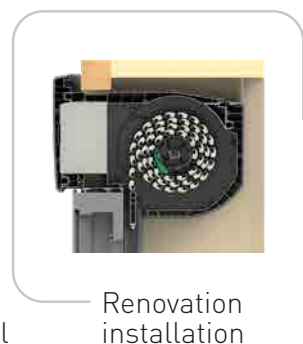
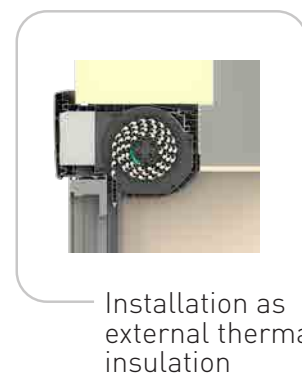


SOLAR PROTECTION

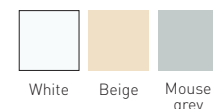
NEW



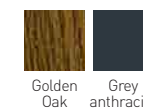
LES MISES EN ŒUVRE



COLORS OF THE PANELS MASS COLOURED



PLAXED

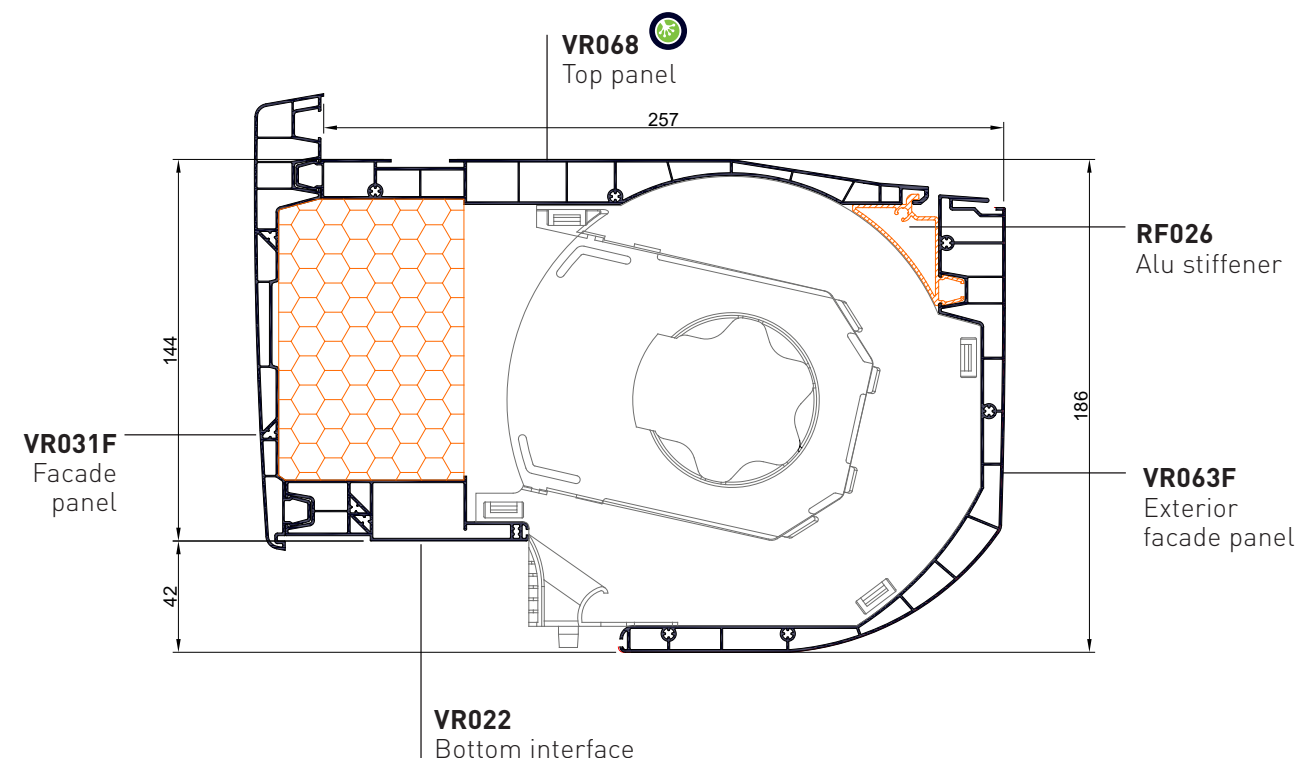


80+ plated film decors
available upon request

RENO
CITY
BOX IN
VIDEO



PANELS - RENO CITY



PACK SIZES

	VR022	VR031F	VR063F	VR068	RF026
Bars of 6 ml / Pack	4	4	2	4	4
Bars of 6 ml / Container	160	108	30	72	-

CERTIFIED PERFORMANCE

THERMAL :

Uc = 1,03 W/m².K. with standard EPS

Uc = 0,67 W/m².K. with reinforced thermal insulation made of graphite EPS

ACOUSTIC : Dn,e,w + Ctr 45 dB standard and up to 51 dB

AIR FLOW : C*4 (AT Value)

WIND : V*4 with opening width up to 3 m (AT Value)





GVR.r

PVC EXTERIOR RENOVATION BOX

For easier installation and maintenance.

A TECHNICAL RESPONSE

The GVR.r box is assembled independently of the joinery and is fixed directly by screwing (0 silicone, 0 fixing bracket).

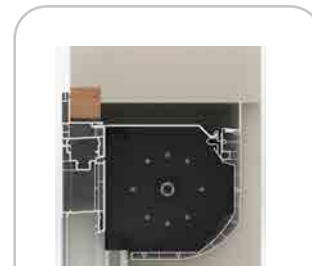
The maintenance of the mechanism is facilitated thanks to **the access from the inside**. Its winding diameter is **160 mm** and it can be operated by winch, motor and solar motorization.

SOLAR PROTECTION



GVR.r
Bioclimatic slat

INSTALLATIONS



Renovation installation



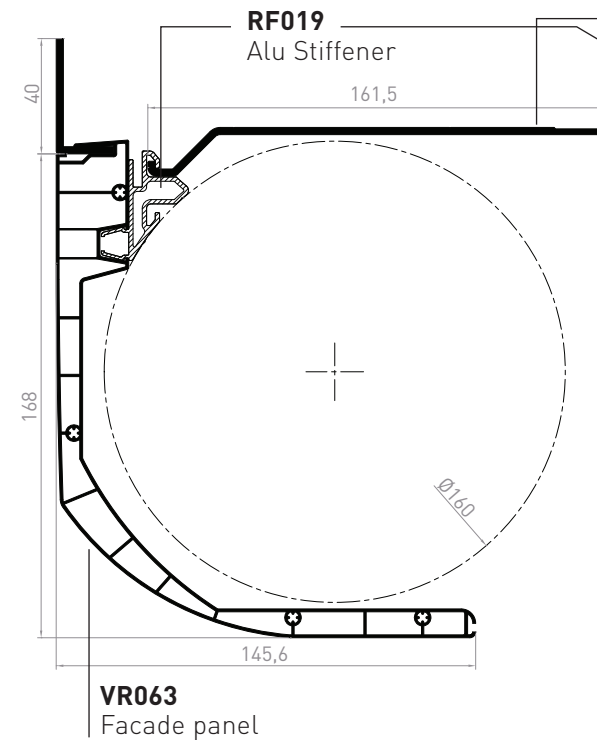
Installation as
external thermal
insulation

CERTIFIES PERFORMANCE

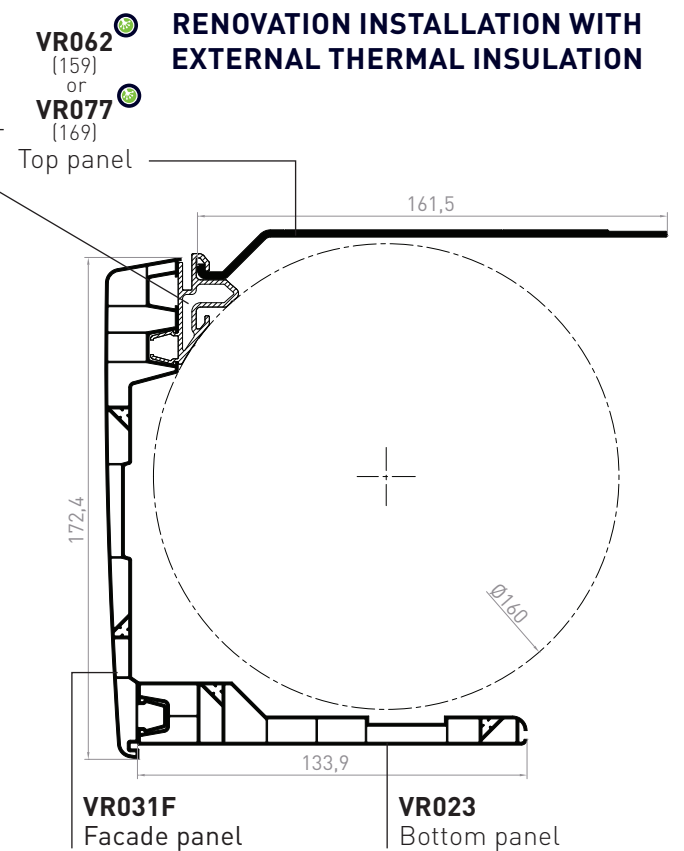
The GVR.r box preserves the intrinsic performance of joinery.

PANELS - GVR.R

INSTALLATION AS RENOVATION



RENOVATION INSTALLATION WITH EXTERNAL THERMAL INSULATION



PACK SIZES

	VR023	VR031F	VR062	VR063	RF019
Bars of 6 ml / Pack	4	4	6	2	6
Bars of 6 ml / Container	150	108	-	30	-

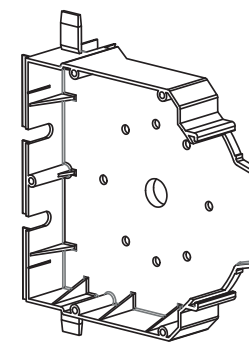
COLORS OF THE PANELS

MASS COLOURED			PLAXED	
White	Beige	Mouse grey	Golden Oak	Grey anthracite

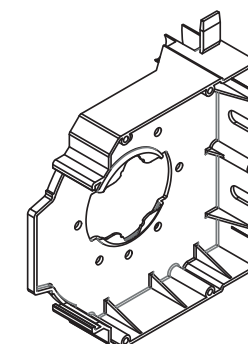
80+ plated film decors available upon request

END PLATES

AC047
Bearing plate
25 parts / cardboard box



AC048
Motor plate
25 parts / cardboard box

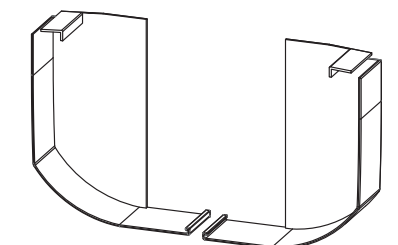


Colors

Black

RENOVATION COVER

AC046
Left and right telescopic end plate
5 pairs / sachet

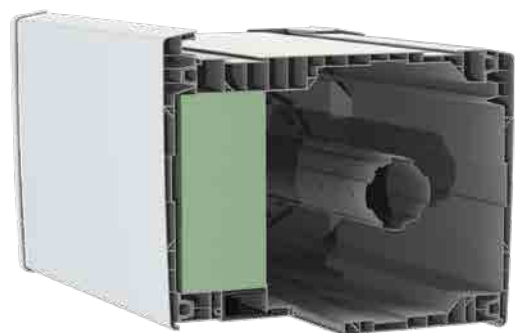


COLORS			PLAXED	
MASS COLOURED				
White	Beige	Mouse grey	Golden Oak	Grey anthracite

80+ plated film decors available upon request

CUSTOMISATION

The exterior panel VR063 is available as mass coloured (white, beige, grey and anthracite grey) and with a PVC or ALU coating.



GVR.e

EXTERNAL WINDING BOX

Ideal in new-generation buildings with exterior thermal insulation.

A TECHNICAL RESPONSE

This box adapts to all the joineries of the market: **PVC, ALU and WOOD**. Its roll-up diameter is 186 mm and its access is easy thanks to the interior trapdoor for the first floor.

All types of maneuvers are possible with the exit of the winch on the front or on the underside. The box comes with a screen kit, a set of PVC and ALU guides.



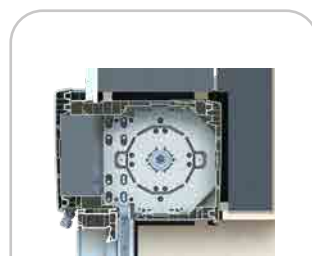
GVRie - FoKus
n°6/15-2264_V2 - Published on 17/11/2021
End of validity le 30/04/2026

SOLAR PROTECTION

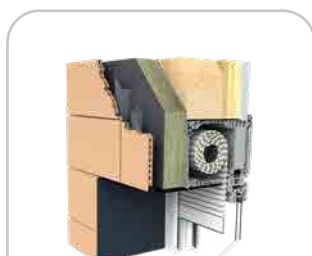


GVR.e
Bioclimatic slat

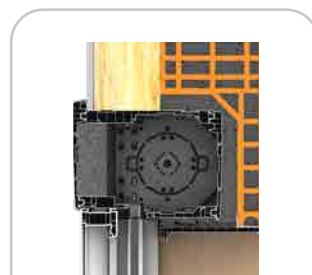
INSTALLATIONS



Installation as
external thermal
insulation.



Installation on
timber-frame
house



Half-lintel
installation
(1st floor access
through
interior hatch)

The GVR.e is used exclusively for an assembly with a recess between the internal wall of the box and the plane passing through the interior side of the fixed frame or opening casement.

CERTIFIED PERFORMANCE

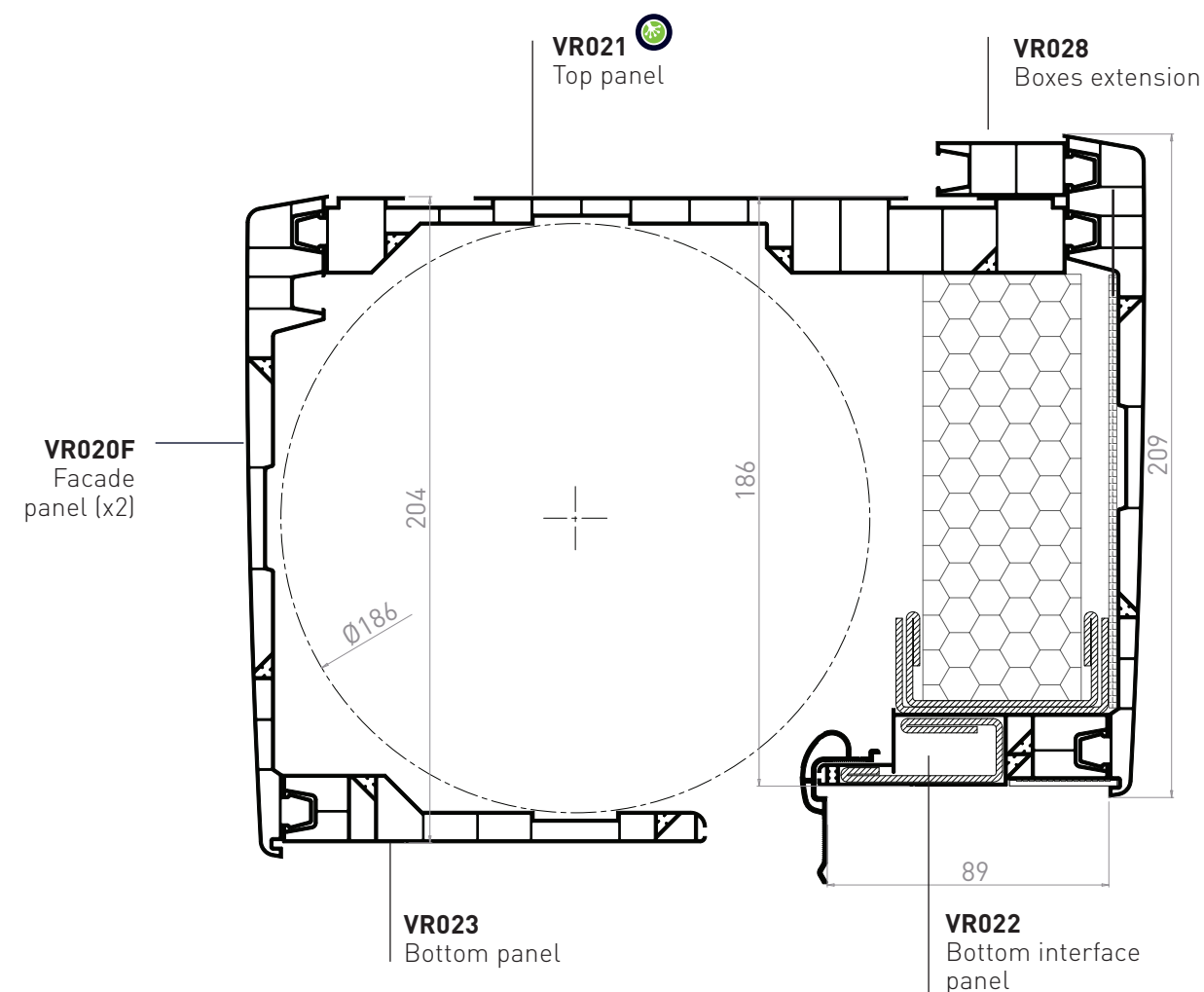
THERMAL : $U_c = 0.54 \text{ W/m}^2\cdot\text{K}$.

ACOUSTIC : $D_{n,e,w} + C_{tr}$ up to 50 dB (FCBA report)

AIR FLOW : C^*4 for all installations (new/reno) and operations on the market (strap, winch, motor) - (AT value)

WIND : $V4^*$ with opening width up to 3 m (AT value)

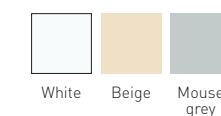
PANELS - GVR.E 205



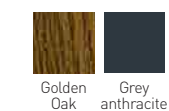
PACK SIZES

	VR020F	VR021	VR022	VR023	VR028
Bars of 6 ml / Pack	4	4	4	4	10
Bars of 6 ml / Container	72	70	160	150	-

COLORS OF THE PANELS MASS COLOURED



PLAXED



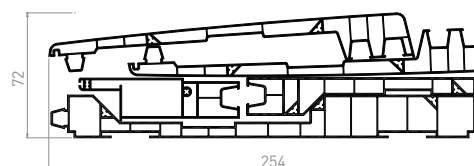
80+ plated film decors available upon request

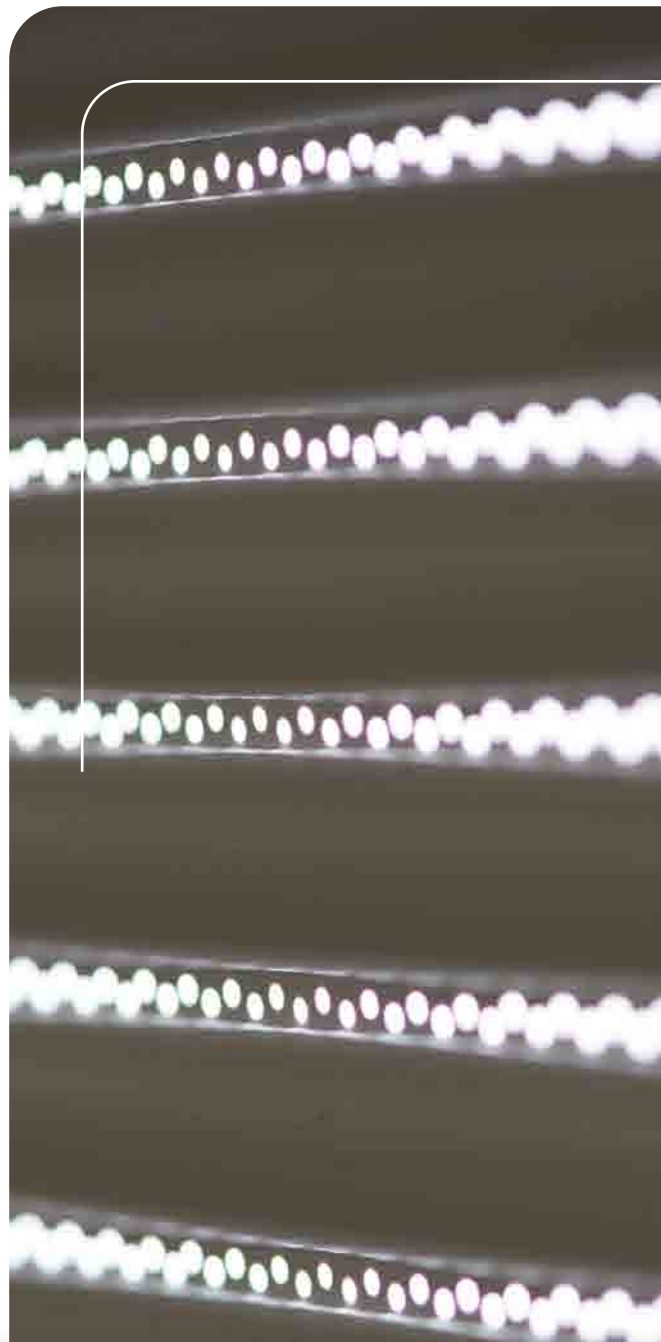
PANEL KIT

VRKE2

5 panels kit
[2 x VR020F]+VR021+VR022+VR023

1kit / pack
18 kits / container





BIOCLIMATIC SLAT,
A Geplast Building exclusive

Lame Bioclimatique®
MARQUE & DESIGN DÉPOSÉS

VIDEO
BIOCLIMATIC SLAT



ALU



PVC



ITS STRENGTHS

◆ Solar gain management

Control of solar gain with **4 times more light and ventilation** in the home than a standard blade for optimal comfort in summer.

Exceptional visibility toward outside in the open position.

Regular micro-punching diffusing a soft and soothing light within the living rooms.

◆ New functionalities

Safety functions and total opacity in the closed position for optimum sleeping comfort thanks to the development of our rubber seals integrated into our sliders.

Improved acoustic comfort when the curtain rises and falls.

Integrated insect screen and blind functions.

Available in PVC or aluminium.

◆ Easy to implement

Manufacture and installation identical to a standard blade.

Ideal for large widths bay.

Curtain must be tested for vertical rise and fall before installation at the customer's premises.



NEW ALU BLADE FORMING MACHINE



"We recently invested in an aluminium roller shutter slat profiling machine. This is located in our new 5,000 m² extension, part of which is dedicated exclusively to this new profiling 'business' at Geplast.

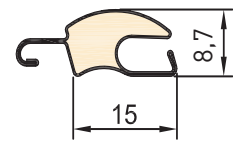
This integration has enabled us to acquire new technical skills in-house and to fully control the production of our Bioclimatique® Blade. Made from 99.5% recycled aluminium strip, the Lame Bioclimatique® is part of a "responsible" approach. It enables us to meet the challenges of the RE2020, which now requires the control of ventilation and solar gain within homes".

Maxime Grimault
Sales & Marketing Director

REFERENCES AND PACK SIZE

Bioclimatic slat

ALU



NEW

New 0.30mm strap, made from 99.5% recycled aluminium, more resistant to corrosion
New 115Kg/m³ high-density foam for exceptional rigidity

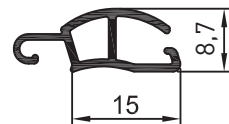
VR040AJ_AL

Bioclimatic slat ALU openwork roller shutter 15 x 8,7mm
 65 bars of 6 ml / pack or 5 trays of 13 slides

Nominal thickness	8,7 mm
Working height	15 mm
Number of slats / m	67
Weight	5 Kg/m ²
Max width	3 m
Max surface area	7 m ²
Standard length	6 m



PVC



VR040AJ

Bioclimatic slat ALU openwork roller shutter 15 x 8.7 mm
 65 bars of 6 ml / pack or 5 trays of 13 slides
 1950 bars of 6 ml / container or 150 trays of 13 slides

Nominal thickness	8,7 mm
Working height	15 mm
Number of slats / m	67
Weight	5 Kg/m ²
Max width	1,6 m
Max surface area	3 m ²
Standard length	6 m

PERFORMANCES

PVC

THERMAL

Rsh = 0,101 m².K/W
 Classe 4 : Δr = 0,22 m².K/W
 Classe 5 : Δr = 0,27 m².K/W

ALU

THERMAL

Rsh = 0,01 m².K/W
 Classe 4 : ΔR = 0,15 m².K/W
 Classe 5 : ΔR = 0,18 m².K/W

AÉRAULIC

Safety pressure classes 1.5p (N/m²)
 Indicative tests

Width	1000	1200	1400	1600
Height				
2250 mm	V*6	V*5	V*4	V*3
1400 mm	V*6	V*5	V*4	V*3

AÉRAULIC

Safety pressure classes 1.5p (N/m²) - Indicative tests

Width	0 à 2000	2100	2200	2300 à 2400	2500	2600 à 2800	2900	3000
Height								
2250 mm	V*6	V*5	V*5	V*5	V*4	V*4	V*3	V*3
1400 mm	V*6	V*6	V*6	V*5	V*5	V*4	V*4	V*4

LIGHT TRANSMISSION

Normal / hemispheric light transmission factor :
 $T_v^{nh} = 3\%$ (PV CSTB)

The bioclimatic slat, in the openwork position, is comparable to a awning fabric or ZIP blind in terms of light comfort and provides excellent glare control.

Transmission factor of solar radiation inside the building, roller shutter closed

Light colours (white, light gri...)	[L* ≥82]	Sws = 0,05
Dark colours (brown, black, etc.)	[L* ≤82]	Sws = 0,10

AIR PERMEABILITY

The bioclimatic slat allows an airflow (over-ventilation that allows the air in the house to be cooled):
Qa = 939m³/h per m² of deck (PV CSTB)

CORROSION RESISTANT

New, more corrosion-resistant ALU strip.
 Salt spray test (PV CSTB).

Final slat

VR081F_AL

Final blade 49 x 8,5 mm
 10 bars of 6 ml / pack



STOCK LACQUERED COLOURS

Gloss white 9016 Satin anthracite 7016

Gross + other colours available, similar to those of Bioclimatique® Blades from 60ml upwards

AC120_N0004
 End blade seal
 200mm roll

COLORS

Black

Installation



FoKus 235 box - Timber frame assembly
 ALU bioclimatic® slat - anthracite grey 7016

WINDING DIAMETERS IN BOXES

	Maximum number of blades	Maximum height under box	Maximum winding Ø
IrYs	164	2450	Ø 200
FoKus 235	180	2700	Ø 200
FoKus 205	130	1950	Ø 180
FoKus 168	90	1350	Ø 145
GVR.e	150	2250	Ø 185
GVR.dL	150	2250	Ø 185
Reno City	100	1500	Ø 170
GVR.r	103	1550	Ø 160

The heights under the box are given as an indication and must be verified by tests in situ at the assembler's.

Available colours Bioclimatic slat & final slat

Other colours on request.

ALU COLORIS LAQUÉS 4 NEW COLORS

Umber grey | RAL 7022
 code : VR040AJ_AL7022

Alu natural | RAL 9006
 code : VR040AJ_AL9006

Grey 2900 sanded
 code : VR040AJ_AL2900S

Black 9005
 code : VR040AJ_AL9005

Beige | RAL 1015
 code : VR040AJ_AL1015

White | RAL 9016
 code : VR040AJ_AL9016

Dark brown | RAL 8019
 code : VR040AJ_AL8019

Light grey | RAL 7035
 code : VR040AJ_AL7035

Black 2100 sanded
 code : VR040AJ_AL2100S

Anthracite grey | RAL 7016
 code : VR040AJ_AL7016

PVC COLORS MASS COLOURED

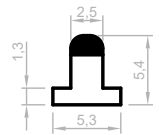
Blanc | RAL 9016
 code : VR040AJ_BL012

It is imperative to use the PVC/ALU runners, rubber seals and end slats recommended by GEPLAST, without which GEPLAST declines all responsibility.

Rails and rubber seals

Designed and extruded in ABS and soft PVC for better resistance to heat and shrinkage, our rubber seals can be integrated with Geplast's PVC or ALU guiderails as well as with traditional and renovation guiderails on the market.

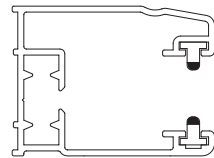
With Geplast ALU guiderails :



AC101_N0004

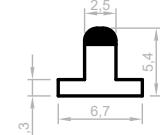
Black rubber seals
5,3 x 5,4 mm

50 bars of 6 ml / pack



Mounting plan on
ALU runner

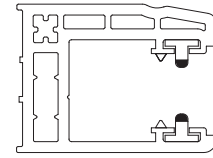
With Geplast PVC guiderails :



AC102_N0004

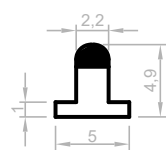
Black rubber seals
6,7 x 5,4 mm

50 bars of 6 ml / pack



Mounting plan
on PVC runner

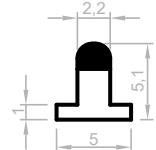
With traditional ALU guiderails and market renovations :



AC100_N0004

Black rubber seals
5 x 4,9 mm

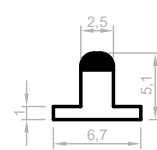
50 bars of 6 ml / pack



AC103_N0004

Black rubber seals
5 x 5,1 mm

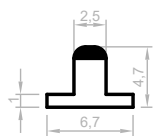
50 bars of 6 ml / pack



AC117_N0004

Black rubber seals
6,7 x 5,1 mm

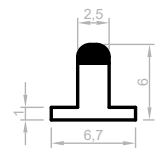
50 bars of 6 ml / pack



AC118_N0004

Black rubber seals
6,7 x 4,7 mm

50 bars of 6 ml / pack



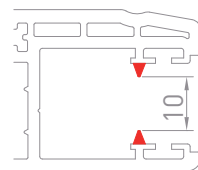
AC119_N0004

Black rubber seals
6,7 x 6 mm

50 bars of 6 ml / pack



Assembly of the
rubber seal on PVC
guiderail



NB : the bioclimatic slat is
used with the PVC guiderail
and the coextruded joint :
JC10



Installed in a positive energy building, your bioclimatic slat offers real living comfort in summer with controlled solar gain.

SPECIFIC MACHINES

Geplast has set up a partnership with manufacturers of machines and roller shutter end caps. These end caps, to be placed at the edges of the slats, offer many advantages :

- ◆ Reduced manufacturing time
- ◆ Easier to roll up the apron
- ◆ Keeping the slats in place against translation
- ◆ Anti-noise and anti-friction clamping system



Manual stapler

Machine for cutting and assembling
aluminium roller shutter apron



END CAP FOR 15 MM BIOCLIMATIC SLAT



AC079

10 000 pieces/carton

The end cap is attached to the left and right ends of the PVC and ALU slats. Its role is to stop the horizontal translation of the slats in order to guarantee an optimal operation of the bioclimatic roller shutter.

Automatic stapler

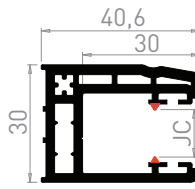


In accordance with FFB guidelines, roller shutters, when deployed, can sometimes present a wavy appearance. This phenomenon is accentuated for large products. Find out more about the Quality Assessment Guide for roller shutters, available and downloadable from the websites : www.geplast.fr and www.groupeement-actibaie.org.

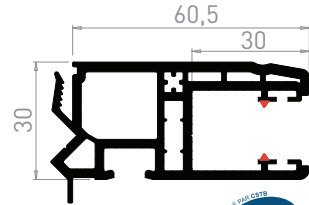
Rails

> PVC RAILS - THICKNESS 2,5 MM

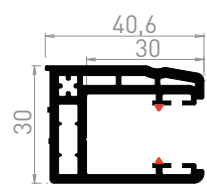
VR003F
Single rail
30 mm at 90°
6 bars of 6 ml / pack
320 bars of 6 ml / container



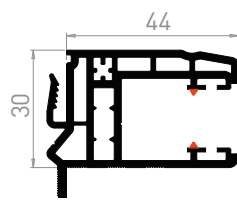
VR004F
Tapped renovation rail
30 mm with spoiler
4 bars of 6 ml / pack
144 bars of 6 ml / container



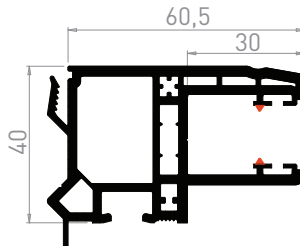
VR005F
Single rail
30 mm at 93°
6 bars of 6 ml / pack
300 bars of 6 ml / container



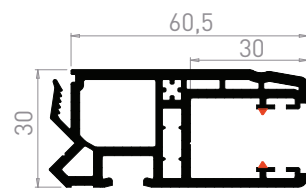
VR007F
Renovation rail
30 mm with spoiler
4 bars of 6 ml / pack
221 bars of 6 ml / container



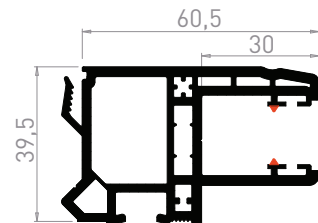
VR008F
Tapped renovation rail
40 mm with spoiler
4 bars of 6 ml / pack
120 bars de 6 ml / container



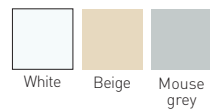
VR014F
Tapped renovation rail
30 mm
4 bars of 6 ml / pack
144 bars of 6 ml / container



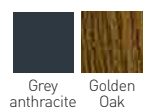
VR018F
Tapped renovation rail
40 mm
4 bars of 6 ml / pack
120 bars of 6 ml / container



COLORS MASS COLOURED



PLAXED

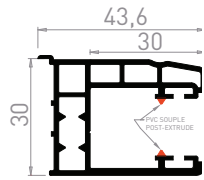


80+ plated film decors
available upon request

> PVC RAILS - THICKNESS 1.2 MM



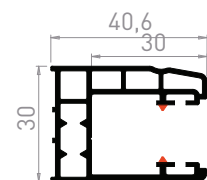
VR013JC
Single rail
30 mm at 90° with spoiler
6 bars of 6 ml / pack
300 bars of 6 ml / container



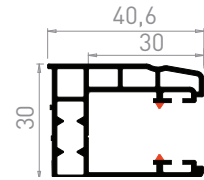
VR015JC
Single rail
30 mm at 93° with spoiler
6 bars of 6 ml / pack
300 bars of 6 ml / container



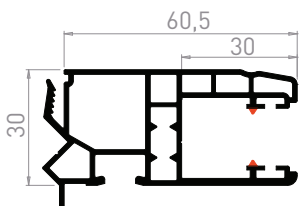
VR033JC
Single rail
30 mm at 90°
6 bars of 6 ml / pack
320 bars of 6 ml / container



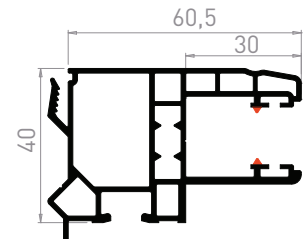
VR035JC
Single rail
30 mm at 93°
6 bars of 6 ml / pack
300 bars of 6 ml / container



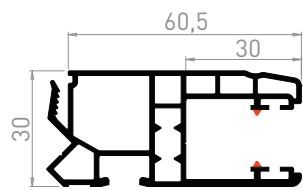
VR036JC
Tapped renovation rail
30 mm with spoiler
4 bars of 6 ml / pack
144 bars of 6 ml / container



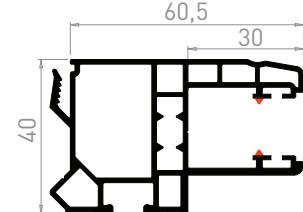
VR038JC
Tapped renovation rail
40 mm with spoiler
4 bars of 6 ml / pack
120 bars of 6 ml / container



VR046JC
Tapped renovation rail
30 mm
4 bars of 6 ml / pack
144 bars of 6 ml / container



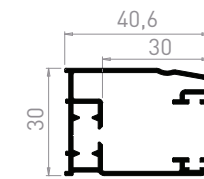
VR048JC
Tapped renovation rail
40 mm
4 bars of 6 ml / pack
120 bars of 6 ml / container



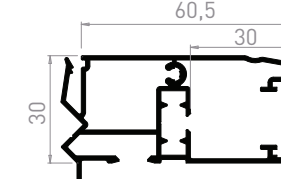
> ALU RAILS



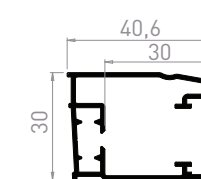
VR003_AL
Single rail
30 mm at 90°
6 bars of 6 ml / pack



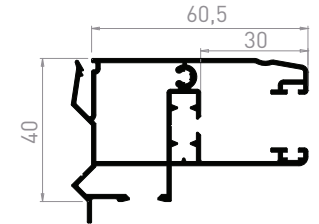
VR004_AL
Tapped renovation rail
30 mm with spoiler
4 bars of 6 ml / pack



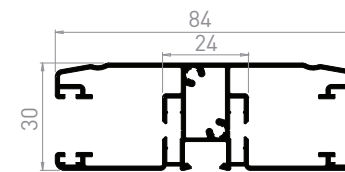
VR005_AL
Single rail
30 mm à 93°
6 bars of 6 ml / pack



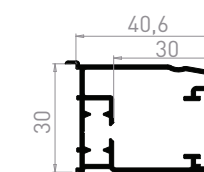
VR008_AL
Tapped renovation rail
40 mm with spoiler
4 bars of 6 ml / pack



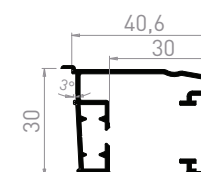
VR010_AL
Double rail
30 mm
4 bars of 6 ml / pack



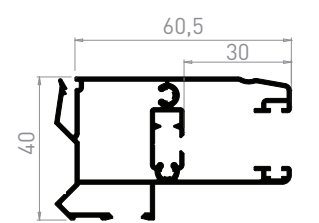
VR013_AL
Single rail 30 mm at
90° with spoiler
6 bars of 6 ml / pack



VR015_AL
Single rail 30 mm
at 93° with spoiler
6 bars of 6 ml / pack

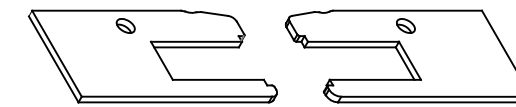


VR018_AL
Tapped renovation rail
40 mm
4 bars of 6 ml / pack

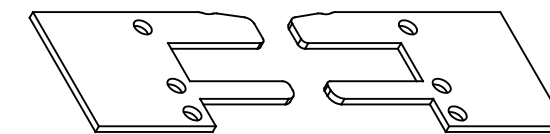


SEALING PLATES

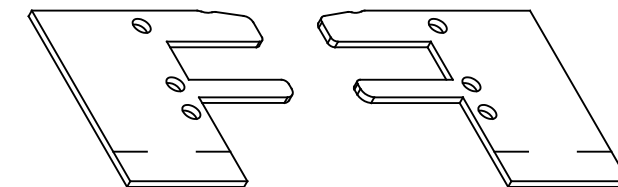
AC002
For VR004, VR014 and VR007
Rolls 200 pairs / pack



AC008
For VR008 and VR018
Rolls 200 pairs / pack



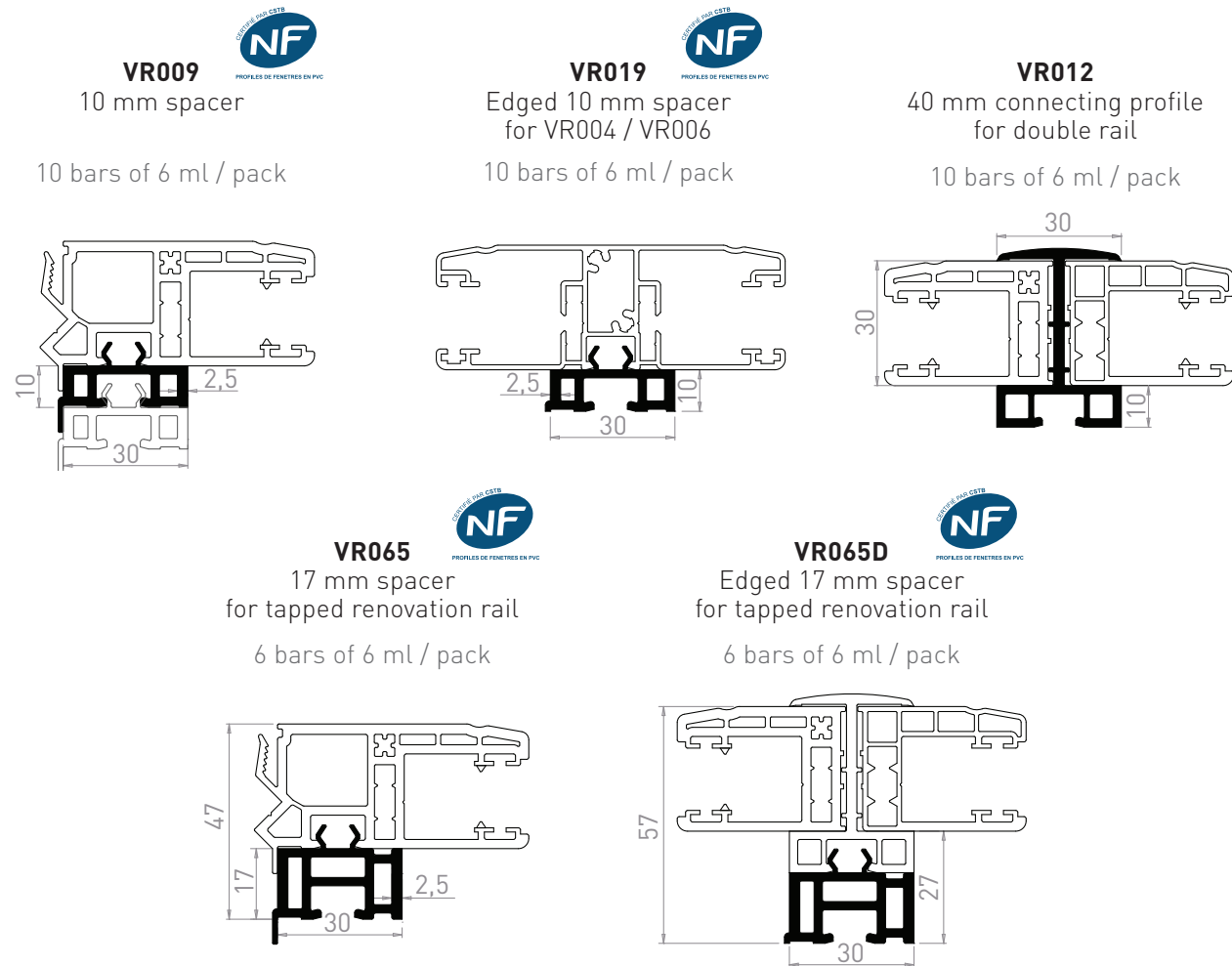
AC007
For VR008 and VR018,
VR009 and VR019
Rolls 200 pairs / pack



COLORS



BLOCKS FOR RAILS

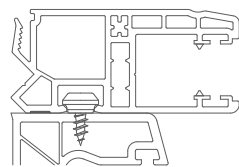


Practical guide

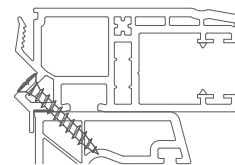
SCREWING

To screw **the rails** to your frame, we recommend two SFS screws :

SFS Screw :
SPK/5-74/GS - 4x10



SFS screw :
SPT/24 - 4,3x30 GS



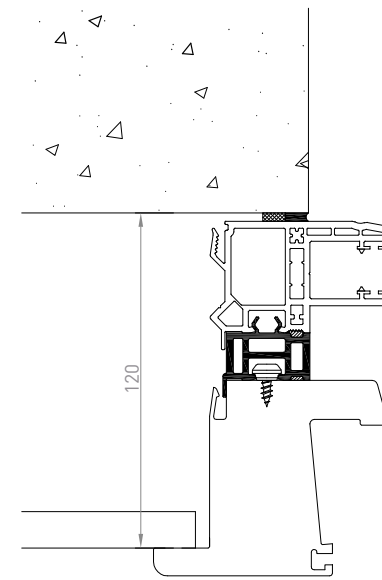
The blocks are all to be fixed with an SFS reference stud screw : SPK/5-74/GS - 4x10

CONFIGURATIONS

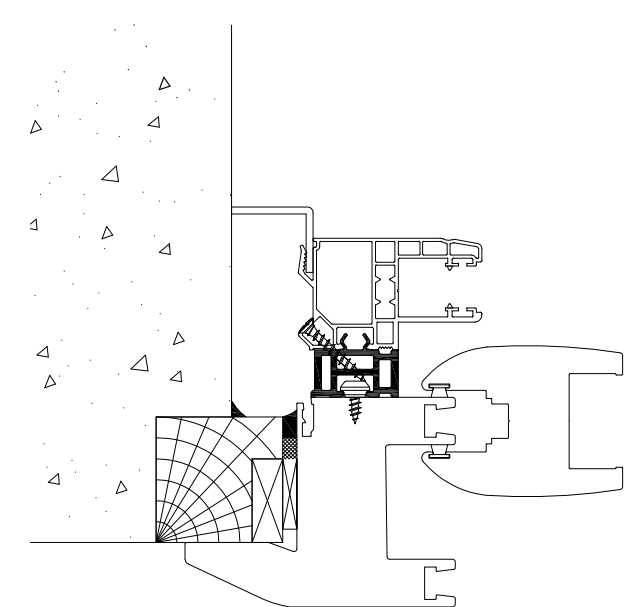
Our range of blocks makes it easier to use the key for renovation doors with lock. It prevents the panel from rubbing on the sliding PVC casements. The VR065 filler plate includes the 120 mm guide when combined with a 40 mm tapped rail (ideal for coated joinery).

The blocks offset the panel of the joinery in the following cases :

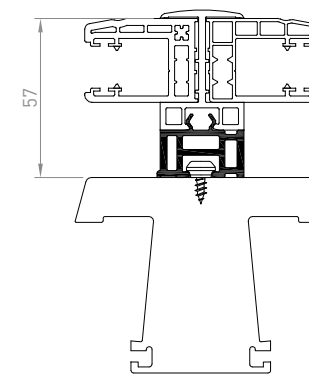
ASSEMBLY ON TAPPED RAIL



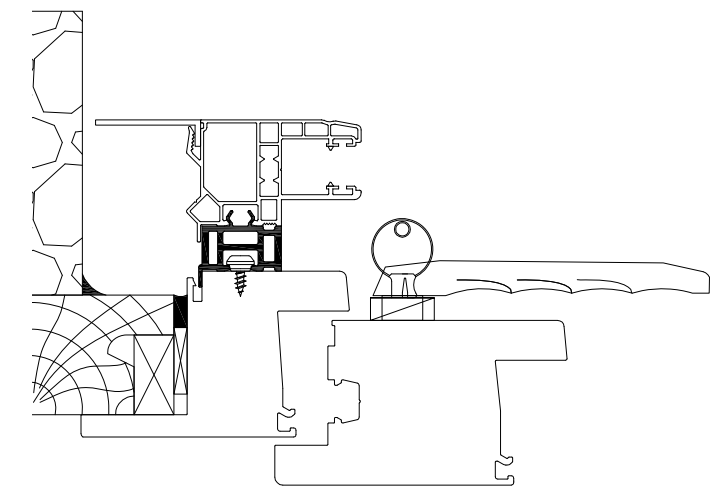
ASSEMBLY ON SLIDING RAIL



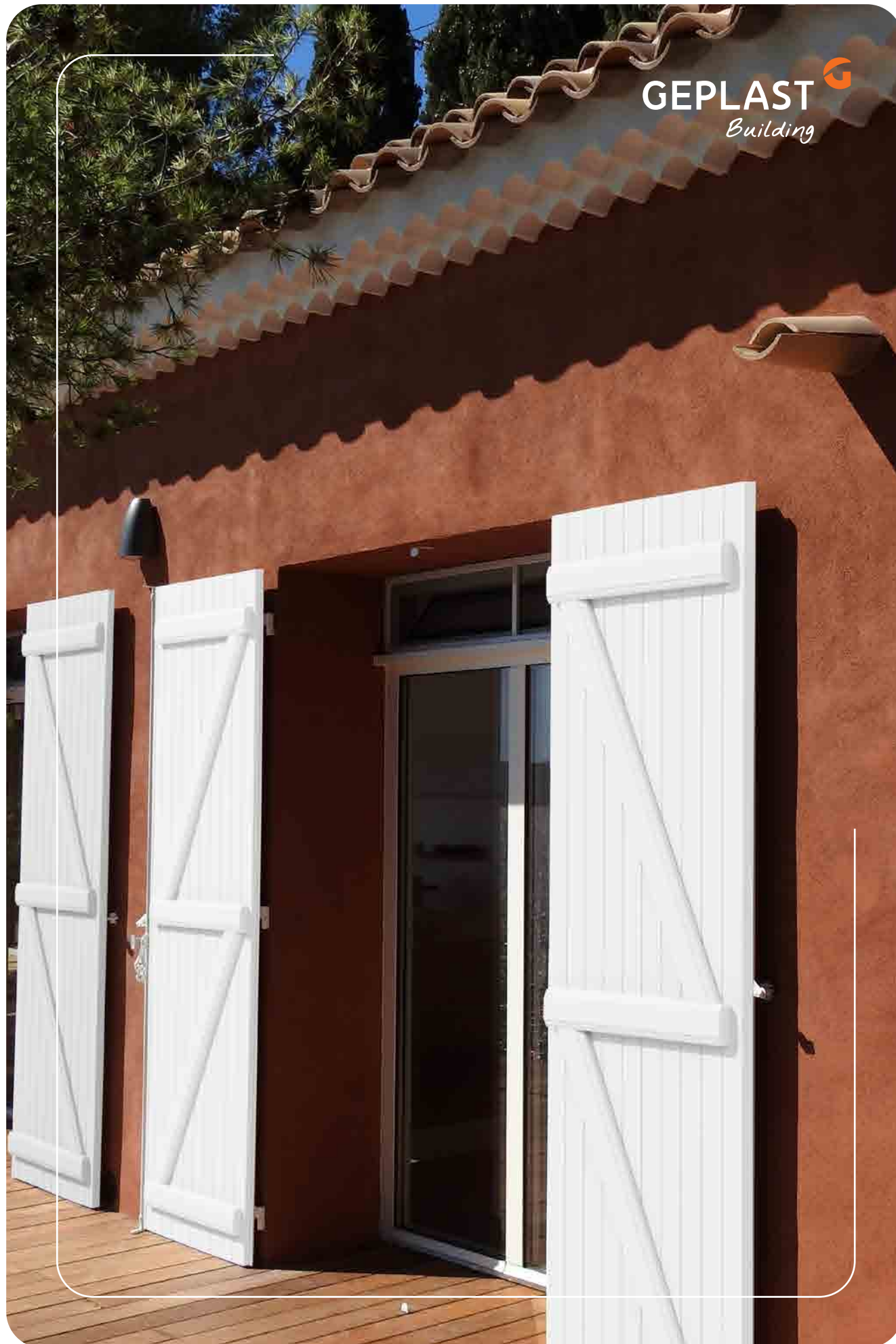
ASSEMBLY ON DOUBLE RAIL



ASSEMBLY ON LOCK HOLDER



To obtain all the technical documents, including all the installation configurations, please contact our customer service department : commercial@geplast.fr

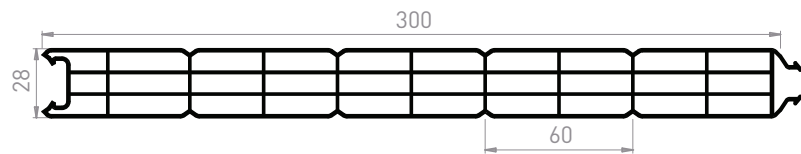


HINGED SHUTTERS

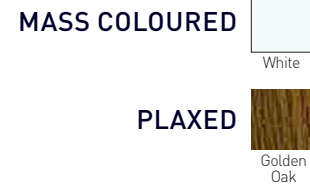
- 40 | Panels
U finish
- 41 | Bars and corner braces
Stiffeners and accessories
Battement and end plate

28 mm panel and stiffener

VB008
Triple-cell panel 300X28
60 pitch
3 bars of 6 ml / pack
36 bars of 6 ml / container

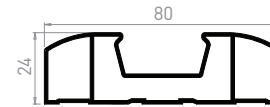


COLOUR OF ALL ELEMENTS



Bars and corner braces

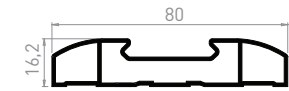
VB013
Shutter bar
80X24
5 bars of 6 ml / pack



VB014
Clip-on cover
10 bars of 6 ml / pack

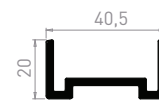


VB015
Shutter corner brace
80X16
10 bars of 6 ml / pack
200 bars of 6 ml / container



Stiffeners and accessories

RF004
Alu stiffener VB013
10 bars of 6 ml / pack



RF005
Alu stiffener VB015
10 bars of 6 ml / pack



PIC050
End plate VB013
50 parts / bag



CERTIFIED PERFORMANCE

GOOD THERMAL AND PHONIC INSULATION

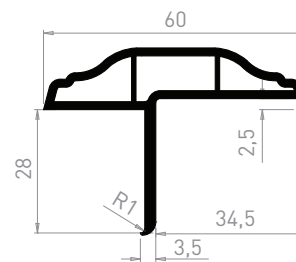
EXCELLENT RIGIDITY

BAR AND CORNER BRACES

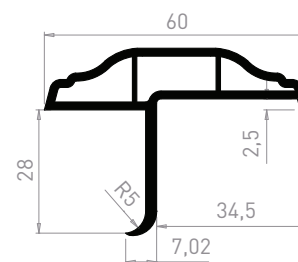


Battement

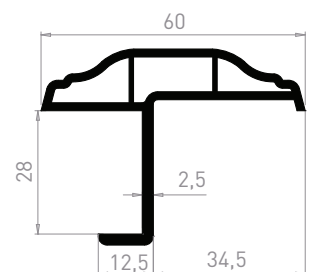
CL042
28 mm moulded battement - R1
5 bars of 6 ml / pack



CL043
28 mm moulded battement - R5
5 bars of 6 ml / pack



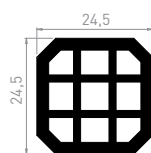
CL066
28 mm moulded battement
5 bars of 6 ml / pack
300 bars of 6 ml / container



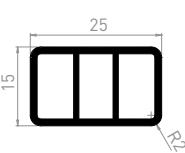
RF020
Galva strengthener
27,75X7
10 bars of 6 ml / pack



VB010
Screwing stiffener
24,5X24,5
5 bars of 6 ml / pack
500 bars of 6 ml / container

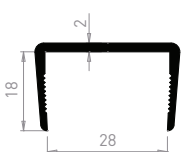


ME089
Filler tube
25X15
20 bars of 6 ml / pack
900 bars of 6 ml / container



U finish

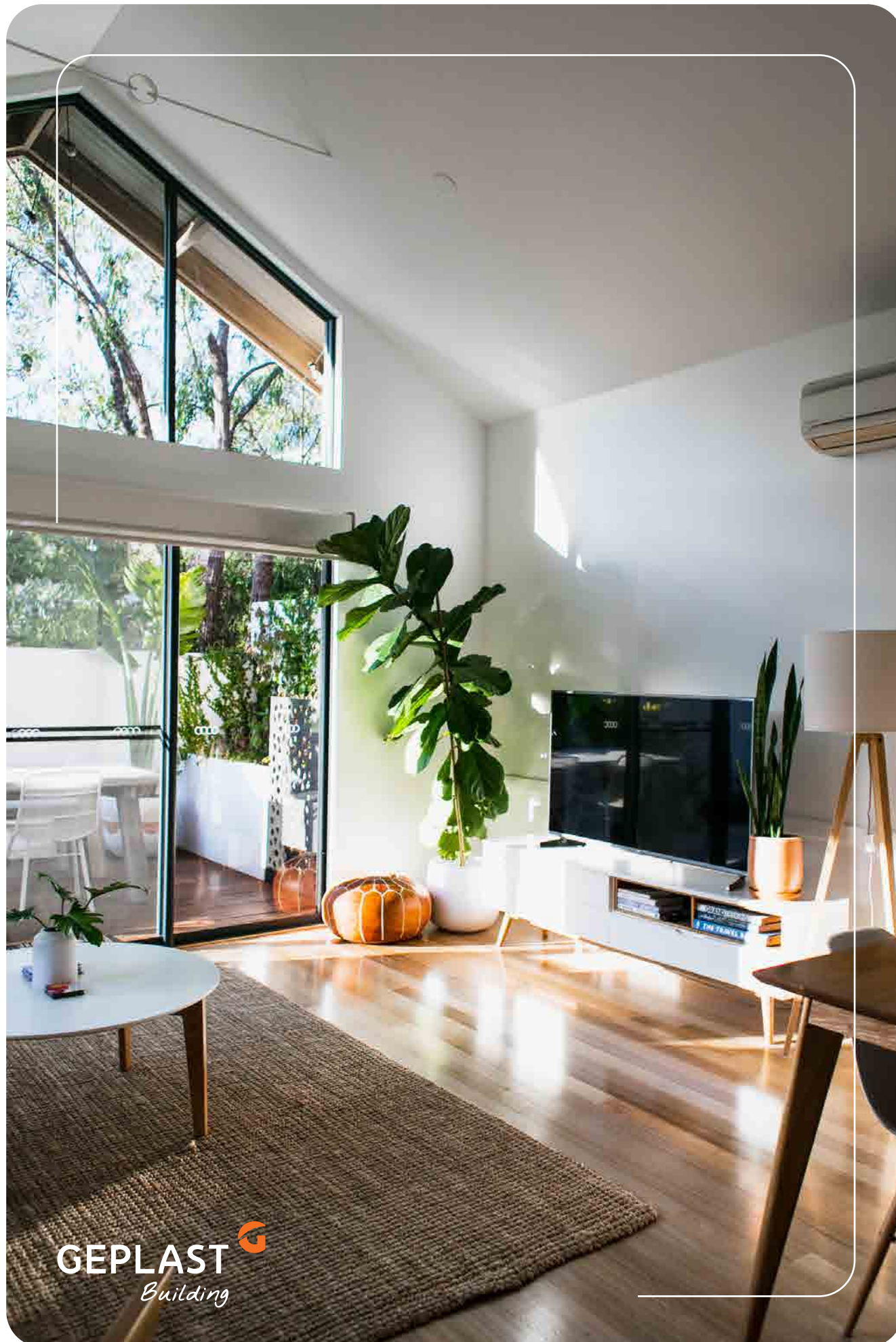
CL063
U finish 28X18X2
20 bars of 6 ml / pack



End plate



PIC033
End plate for moulded battement
50 parts / bag



JOINERY

- 44 Renovation joinery installations
- 44 Complete removal solution
- 47 Profiles for classic renovation :
 - 47 > Flaps
 - 50 > Angle sections
 - 52 > Flat sections
 - 53 > Panels
 - 54 > Tapped inserts
 - 58 > Tapped
 - 58 > Glazing bars
 - 59 > Drainage channels
 - 59 > Connecting profiles and joint cover
 - 60 > Trim mouldings
 - 60 > Miscellaneous blocks and profiles
 - 62 > Storage posts

Renovation joinery installations



REMOVING EXISTING FRAMES

The old joinery is removed with its frame. A new window or door is fitted with a frame to ensure a thermal seal between the joinery and the brickwork.



RETAINING EXISTING FRAMES

This type of installation implies the absolute need to maintain suitable ventilation between the old frame and the exterior trim so as not to jeopardise its durability.

Complete removal solution

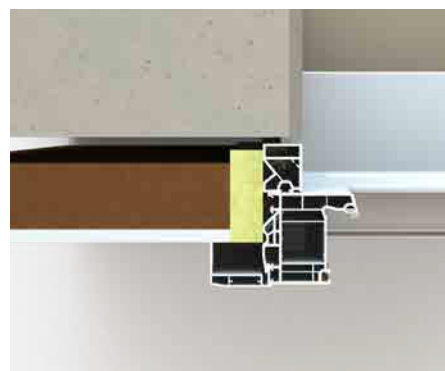
ADVANTAGES OF COMPLETE REMOVAL

- Maximum daylight,
- Perfect seal,
- Practically identical appearance to installation in a new construction.



ADVANTAGES OF THE GEPLAST SOLUTION

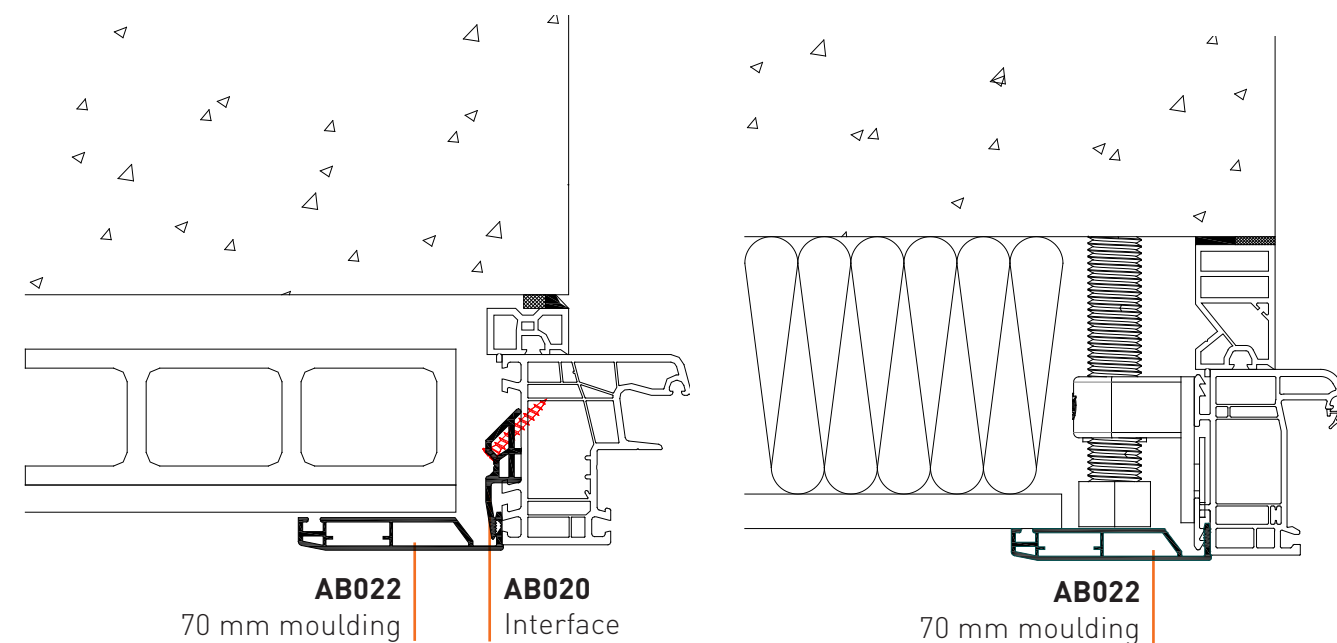
- Considerable thermal improvement by integrating insulation up to the joinery,
- Profile enabling creation of an interior or exterior angle groove on a frame,
- Installation complies with DTU 36-5.



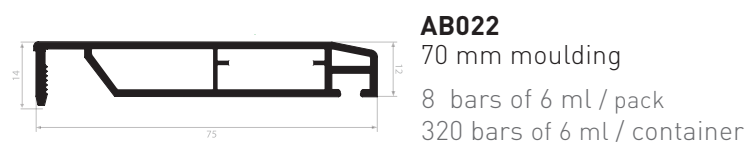
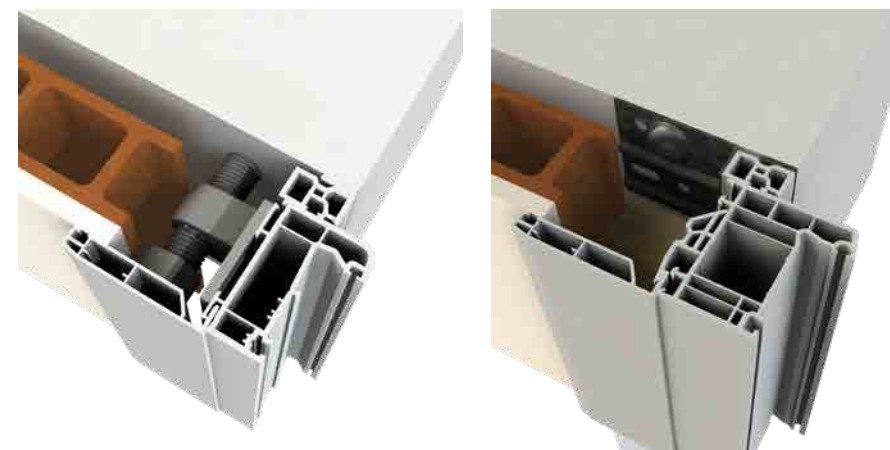
view from above

TRIM MOULDINGS

Assembly drawing

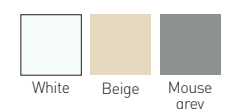


Examples of assemblies with different types of fixings

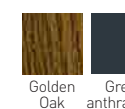


MOULDING COLORS

MASS COLOURED



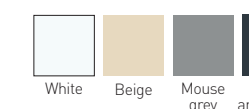
PLAXED



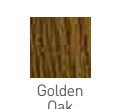
80+ plated film decors available upon request

ANGLE COVER COLORS

MASS COLOURED

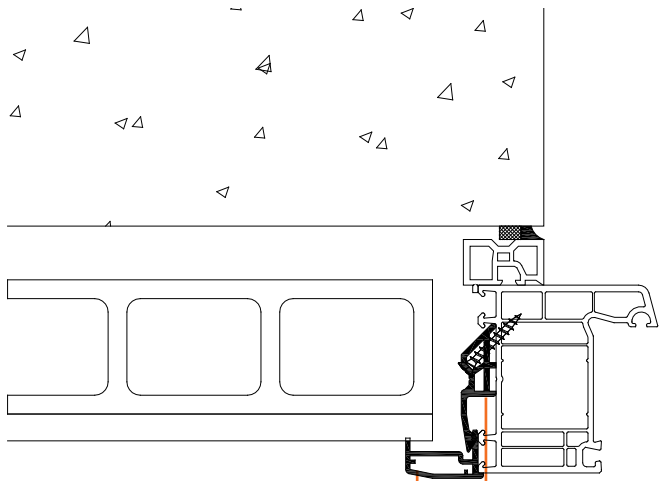


PLAXED



Profiles for classic renovation

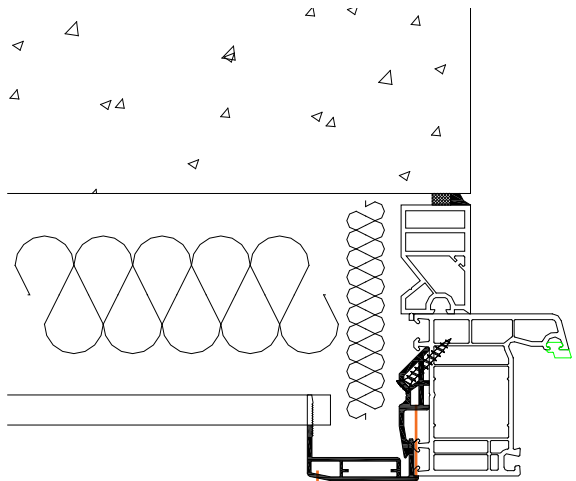
Example with brick and plaster insulation



AB018
27 mm moulding

AB020
Interface

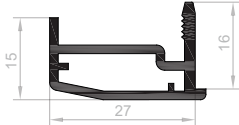
Example with 100 mm plasterboard and glass wool insulation



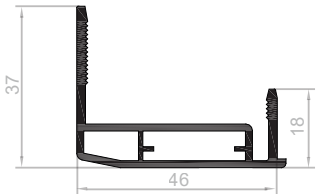
AB019
46 mm moulding

AB020
Interface

AB018
27 mm moulding
10 bars of 6 ml / pack
500 bars of 6 ml / container



AB019
46 mm moulding
10 bars of 6 ml / pack
500 bars of 6 ml / container



COLORS MASS COLOURED

White Beige Mouse grey

PLAXED

Golden Oak Grey anthracite

80+ plated film decors available upon request

PIM001
Black angle bracket
100 parts / bag



COLORS

Black

AB020
Interface for 192 mm trim moulding
240 parts / cardboard



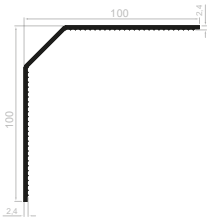
COLORS

White

NEW

> 2.4 MM FLAPS, SERRATED AND PLAXED

CB2401CF_AL
ALU flap 100x100x2.4 serrated, film coated
3 bars of 6 ml / pack
also available to order by the bar.

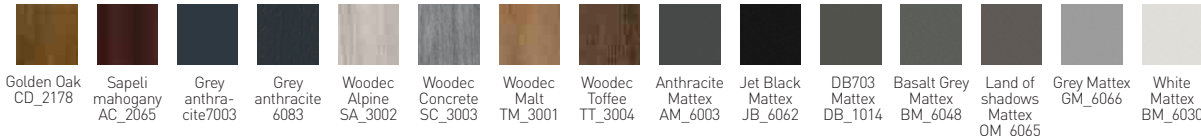


***CB2401C**
Flap 100x100x2.4 notched
5 bars of 6 ml / pack



*Geplast declines all responsibility for this plaxed PVC skirting board in the event of deformation due to sunlight. We strongly recommend that you use the plaxed ALU skirting board.

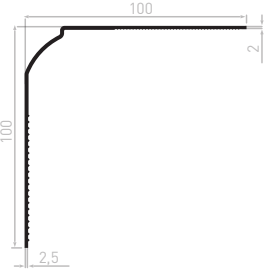
COLORS PLAXED



80+ plated film decors available on request

> ALU FLAP - THICKNESS 2.5 MM

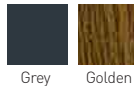
CB2302_AL
Flap 100 x 100 x 2-2.5
AR/Serrated Alu
3 bars of 6 ml / pack
150 bars of 6 ml / container



LACQUERED COLOR



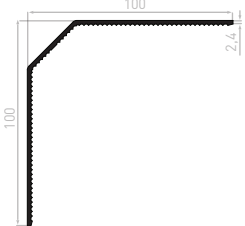
PLAXED



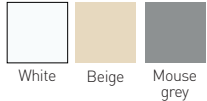
80+ plated film decors available on request

> PVC FLAP - THICKNESS 2.4 MM

CB2401C
Flap 100 x 100 x 2.4/45°
DR/Serrated
5 bars of 6 ml / pack
200 bars of 6 ml / container

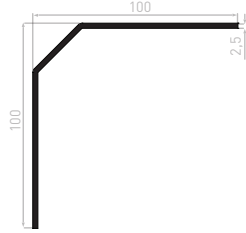


COLORS MASS COLOURED

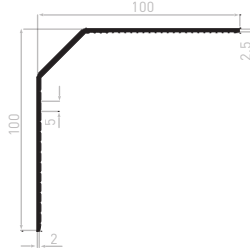


PVC FLAP – THICKNESS 2.5 MM

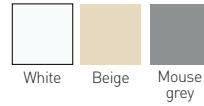
CB2501
Flap 100 x 100 x 2.5/45°
DR
5 bars of 6 ml / pack
250 bars of 6 ml / container



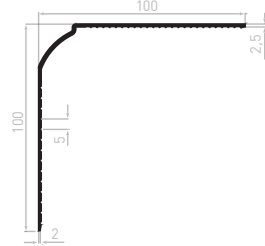
CB2501CS
Flap 100 x 100 x 2.5/45°
DR/Serrated breakable
10 bars of 6 ml / pack
250 bars of 6 ml / container



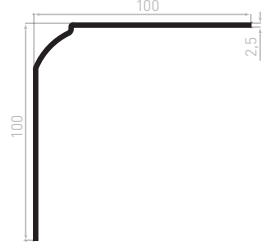
COLORS MASS COLOURED



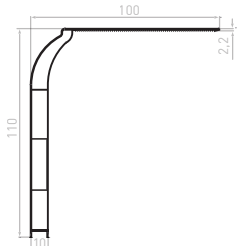
CB2502CS
Flap 100 x 100 x 2.5/45°
AR/Serrated breakable
5 bars of 6 ml / pack
250 bars of 6 ml / container



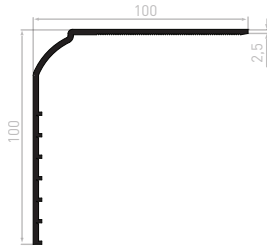
CB2512
Flap 100 x 100 x 2.5/45°
AR
5 bars of 6 ml / pack
250 bars of 6 ml / container



CB2504
Flap 110 x 100 x 2.5
AR-2 Walls
5 bars of 6 ml / pack
170 bars of 6 ml / container



CB2511
Flap 100 x 100 x 2.5/45°
AR/Serrated
5 bars of 6 ml / pack
250 bars of 6 ml / container



COLORS MASS COLOURED



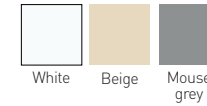
PLAXED



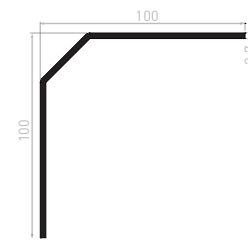
80+ plated film decors
available upon request

PVC FLAP – THICKNESS 2.7 MM

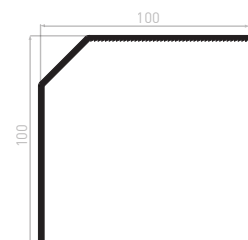
COLORS MASS COLOURED



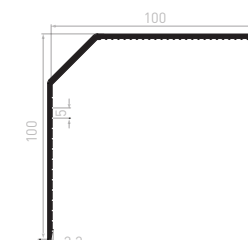
CB2701
Flap 100 x 100 x 2.7/45°
DR
5 bars of 6 ml / pack
200 bars of 6 ml / container



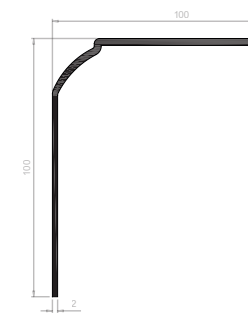
CB2701C
Flap 100 x 100 x 2.7/45°
DR/Serrated
5 bars of 6 ml / pack
250 bars of 6 ml / container



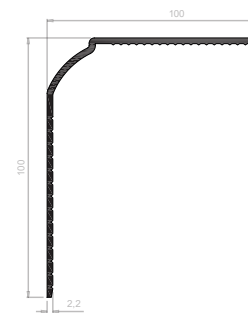
CB2701CS
Flap 100 x 100 x 2.7/45°
DR/Serrated
5 bars of 6 ml / pack
250 bars of 6 ml / container



CB2702
Flap 100 x 100 x 2.7/45°
AR
5 bars of 6 ml / pack
250 bars of 6 ml / container

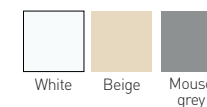


CB2702CS
Flap 100 x 100 x 2.7/45°
DR/Serrated breakable
5 bars of 6 ml / pack
250 bars of 6 ml / container

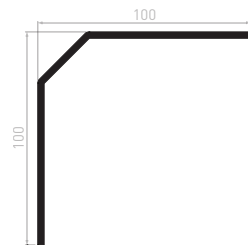


PVC FLAP – THICKNESS 3 MM

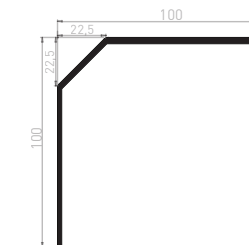
COLORS MASS COLOURED



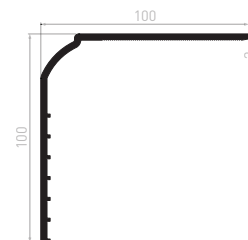
CB3001
Flap 100 x 100 x 3/45° DR
5 bars of 6 ml / pack
200 bars of 6 ml / container



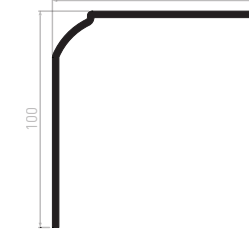
CB2301
Flap 100 x 100 x 3-2/45° DR
5 bars of 6 ml / pack
250 bars of 6 ml / container



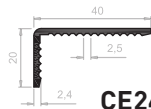
CB3011
Flap 100 x 100 x 3/45°
AR/Serrated
5 bars of 6 ml / pack
200 bars of 6 ml / container



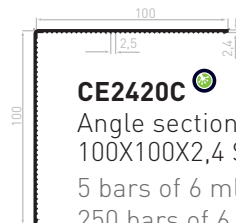
CB3012
Flap 100 x 100 x 3/45°
AR/LIS
5 bars of 6 ml / pack
250 bars of 6 ml / container



> 2.4 MM SERRATED ANGLE SECTIONS PLAXED



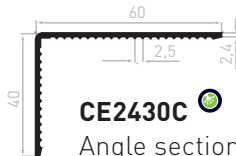
CE2472C
Angle section 40X20X2,4 Serrated
20 bars of 6 ml / pack
600 bars of 6 ml / container



CE2420C
Angle section 100X100X2,4 Serrated
5 bars of 6 ml / pack
250 bars of 6 ml / container
Also available to order by the bar.



CE2421C
Angle section 100X60X2,4 Serrated
5 bars of 6 ml / pack
350 bars of 6 ml / container
Also available to order by the bar.



CE2430C
Angle section 60x40x2,4 Serrated
10 bars of 6 ml / pack
500 bars of 6 ml / container
Also available to order by the bar.

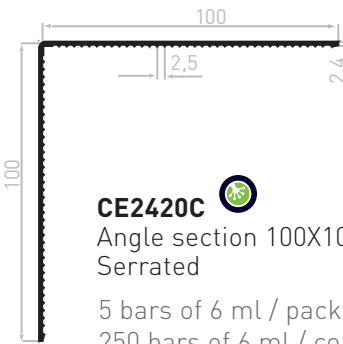
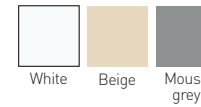
COLORS PLAXED



80+ plated film decors available on request

> PVC ANGLE SECTIONS - THICKNESS 2,4 MM

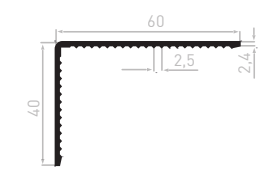
COLORS MASS COLOURED



CE2420C
Angle section 100X100X2,4 Serrated
5 bars of 6 ml / pack
250 bars of 6 ml / container



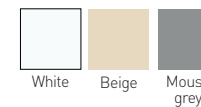
CE2421C
Angle section 100X60X2,4 Serrated
5 bars of 6 ml / pack
350 bars of 6 ml / container



CE2430C
Angle section 60X40X2,4 Serrated
10 bars of 6 ml / pack
600 bars of 6 ml / container

> PVC ANGLE SECTIONS - THICKNESS 2.5 MM

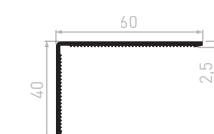
COLORS MASS COLOURED



CE2520C
Angle section 100X100X2,5 Serrated
5 bars of 6 ml / pack
250 bars of 6 ml / container

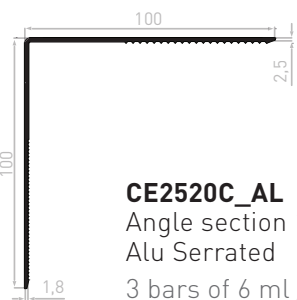


CE2520CS
Angle section 100X100X2,5-2 Serrated breakable
5 bars of 6 ml / pack
250 bars of 6 ml / container

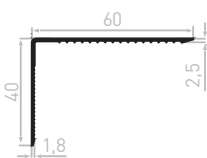


CE2530C
Angle section 60X40X2,5 Serrated
10 bars of 6 ml / pack
600 bars of 6 ml / container

> ALU ANGLE SECTIONS - THICKNESS 2,5 MM



CE2520C_AL
Angle section 100 x 100 x 2.5-2 Alu Serrated
3 bars of 6 ml / pack

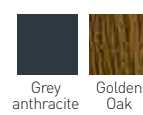


CE2530C_AL
Angle section 60 x 40x2.5-2 Alu Serrated
5 bars of 6 ml / pack

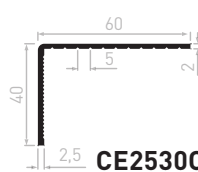
LACQUERED COLOR



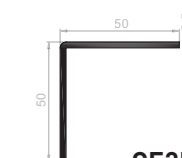
PLAXED



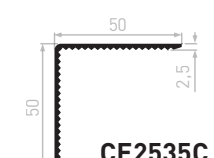
80+ plated film decors available upon request



CE2530CS
Angle section 60X40X2,5-2 Serrated breakable
10 bars of 6 ml / pack
600 bars of 6 ml / container



CE2535
Angle section 50X50X2,5
10 bars of 6 ml / pack
500 bars of 6 ml / container



CE2535C
Angle section 50X50X2,5 Serrated
10 bars of 6 ml / pack
500 bars of 6 ml / container

> PVC ANGLE SECTIONS - THICKNESS 2 MM



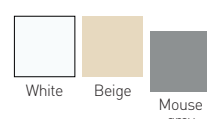
CE2045
Angle section 60 x 50 x 2 Breakable
10 bars of 6 ml / pack
640 bars of 6 ml / container

COLORS MASS COLOURED

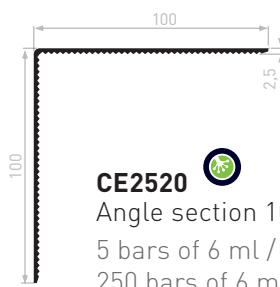


CE2041
Angle section 60X40X2
15 bars of 6 ml / pack
600 bars of 6 ml / container

COLORS MASS COLOURED



COLORS MASS COLOURED

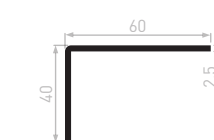


CE2520
Angle section 100X100X2,5
5 bars of 6 ml / pack
250 bars of 6 ml / container

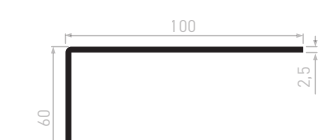
PLAXED



80+ plated film decors available upon request



CE2530
Angle section 60X40X2,5
10 bars of 6 ml / pack
500 bars of 6 ml / container

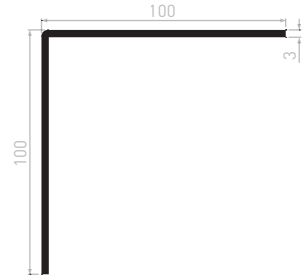


CE2521
Angle section 100X60X2,5
5 bars of 6 ml / pack
300 bars of 6 ml / container

> PVC ANGLE SECTIONS - THICKNESS 3 MM

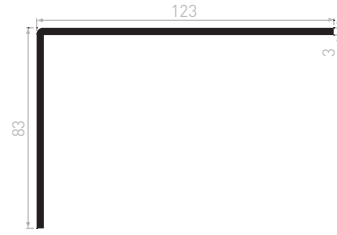
CE3020 
Angle section 100X100X3

5 bars of 6 ml / pack
200 bars of 6 ml / container



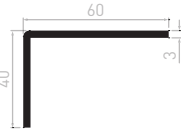
CE3015 
Angle section 123X83X3

5 bars of 6 ml / pack
200 bars of 6 ml / container

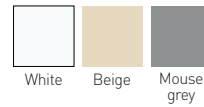


CE3030 
Angle section 60X40X3

10 bars of 6 ml / pack
400 bars of 6 ml / container



COLORS MASS COLOURED



> FLAT SECTIONS THICKNESS 2.4 MM SERRATED

PL2415C 
Flat section 100X2,4 Serrated

10 bars of 6 ml / pack
600 bars of 6 ml / container



PL2435C 
Flat section 50X2,4 Serrated

20 bars of 6 ml / pack
600 bars of 6 ml / container

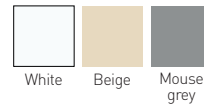


PL2445C 
Flat section 30X2,4 Serrated


20 bars of 6 ml / pack
600 bars of 6 ml / container



COLORS MASS COLOURED



> FLAT SECTIONS THICKNESS 2 MM DIVISIBLE


PL2015S 
Plat 100X2 Sécable
10 barres de 6 ml / paquet
400 barres de 6 ml / par container




COLORIS
TEINTÉS MASSE

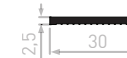



> FLAT SECTIONS THICKNESS 2.5 MM TOOTHED

PL2515D 
Flat 100X2,5 Toothed
10 bars of 6 ml / pack
600 bars of 6 ml / container



PL2545D 
Flat 30X2,5 Toothed
20 bars of 6 ml / pack
800 bars of 6 ml / container



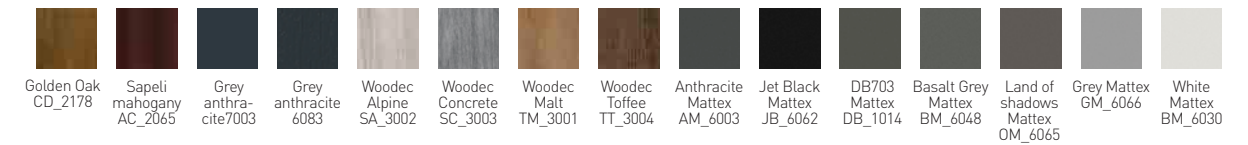
PL2535D 
Flat 50X2,5 Toothed
20 bars of 6 ml / pack
800 bars of 6 ml / container



COLORS MASS COLOURED



COLORS PLAXED



80+ plated film decors available on request

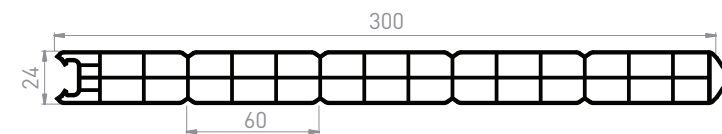
This is only a partial list. To find out about all our flashings, angle and flat sections, please contact our Customer service department : commercial@geplast.fr

> PANEL - THICKNESS 24 MM

VB001
Triplewall panels 300 x 24
60 pitch



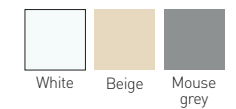
3 bars of 6 ml / pack
42 bars of 6 ml / container



CERTIFIED

Thermal coefficient : 2.1 W/(m².K)
Acoustic coefficient : 26 dB

PANEL COLORS
MASS COLOURED

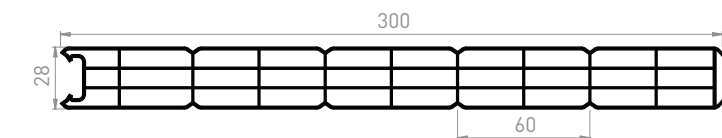


> PANELS - THICKNESS 28 MM

VB008
Triple-cell panel 300 x 28
60 pitch



3 bars of 6 ml / pack
36 bars of 6 ml / container



CERTIFIED

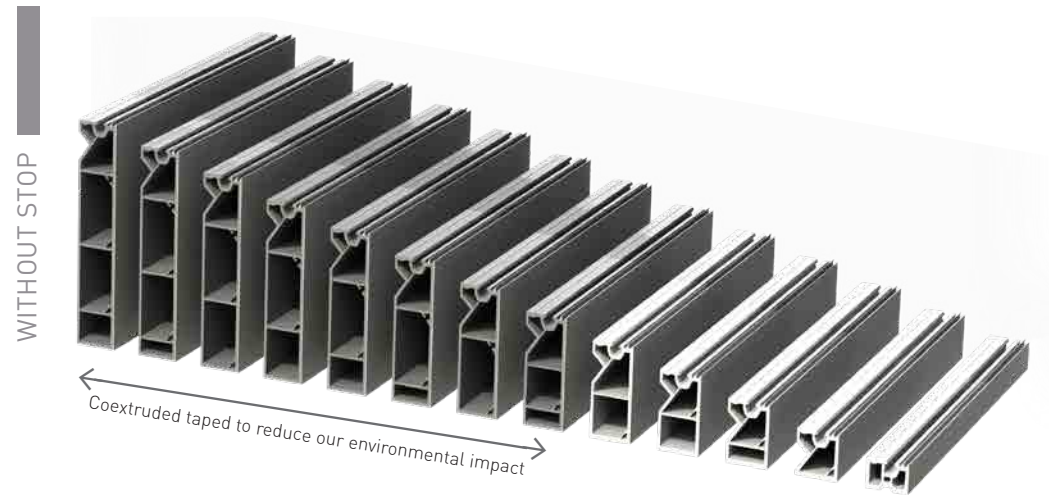
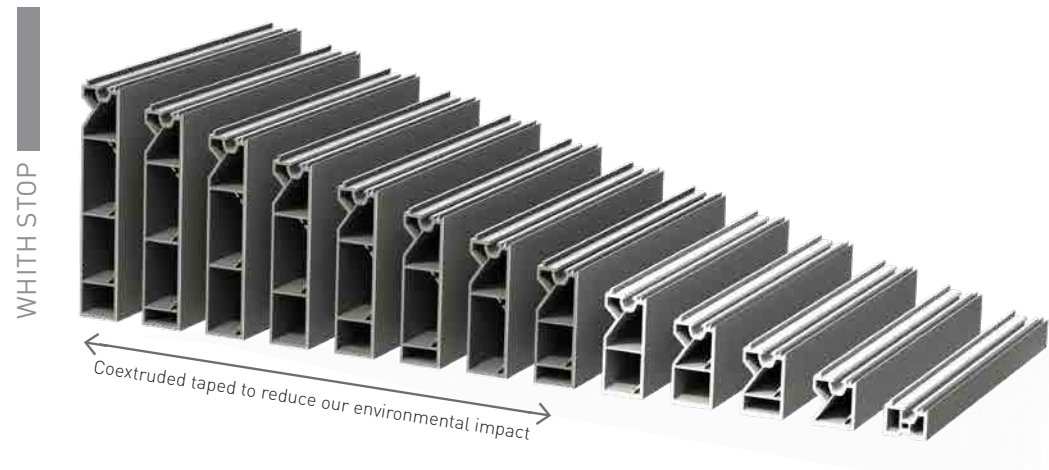
Thermal coefficient: 1.647 W/(m².K)

RF020
Galva stiffener for VB008
27,75X7

10 bars of 6 ml / pack

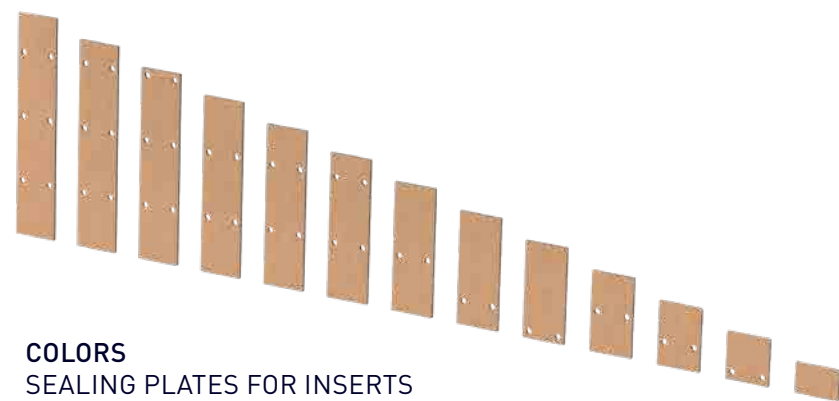


NEW: all references are available by the bar (except white).



SEALING PLATES FOR INSERTS

Roll of 200 units



COLORS

SEALING PLATES FOR INSERTS



White Black

ME050JC ME050D JC AC104

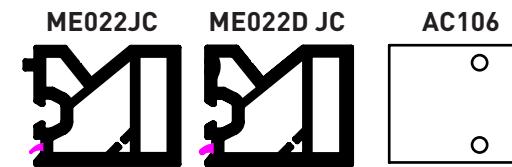


17 mm tapped - coextruded seal
10 bars of 6 ml / pack
390 bars of 6 ml / container

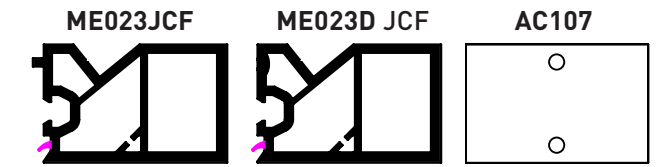
ME021JC ME021D JC AC105



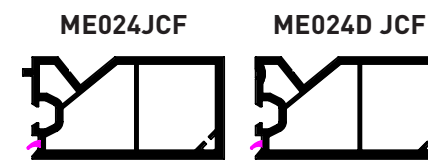
27 mm tapped - coextruded seal
5 bars of 6 ml / pack
330 bars of 6 ml / container



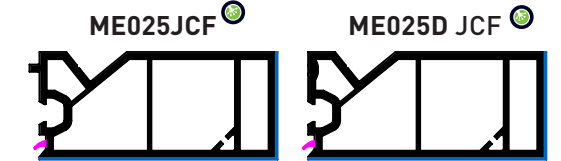
37 mm tapped - coextruded seal
5 bars of 6 ml / pack
240 bars of 6 ml / container



47 mm tapped - coextruded seal
5 bars of 6 ml / pack
200 bars of 6 ml / container

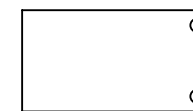


57 mm tapped - coextruded seal
5 bars of 6 ml / pack
170 bars of 6 ml / container



Tapped 67 mm - coex + coextruded seal
5 bars of 6 ml / pack
150 bars of 6 ml / container

AC108



AC109



ME026JCF[Ⓢ]

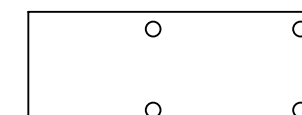


ME026D JCF[Ⓢ]

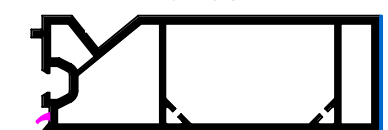


Tapped 77 mm - coex + coextruded seal
3 bars of 6 ml / pack
120 bars of 6 ml / container

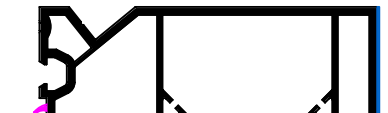
AC110



ME027JCF[Ⓢ]

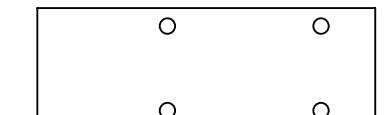


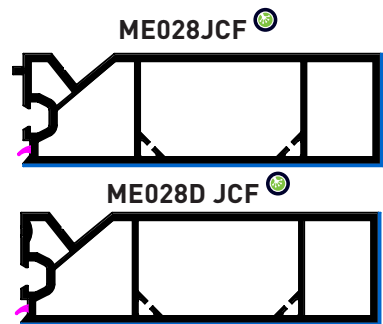
ME027D JCF[Ⓢ]



Tapped 87 mm - coex + coextruded seal
3 bars of 6 ml / pack
110 bars of 6 ml / container

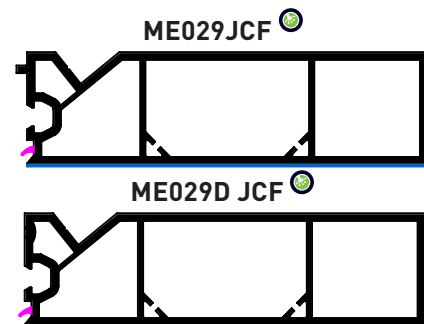
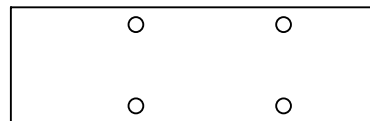
AC111





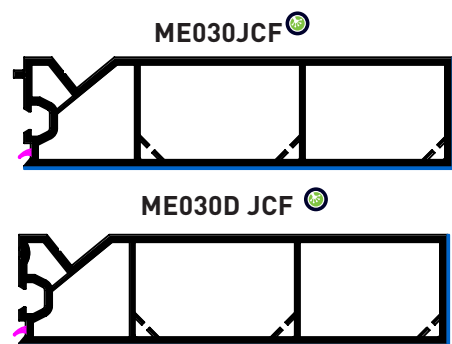
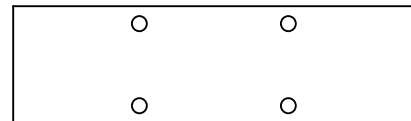
Tapped 97 mm - coex + coextruded seal
3 bars of 6 ml / pack
100 bars of 6 ml / container

AC112



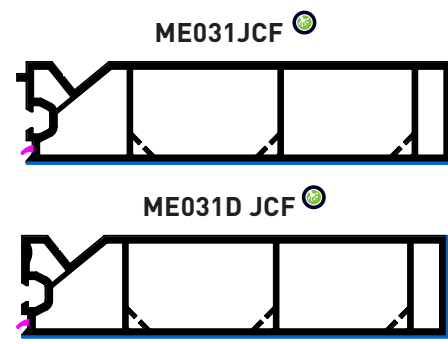
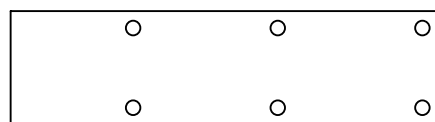
Tapped 107 mm - coex + coextruded seal
3 bars of 6 ml / pack
90 bars of 6 ml / container

AC113



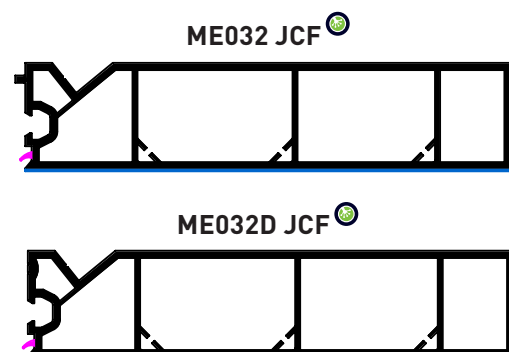
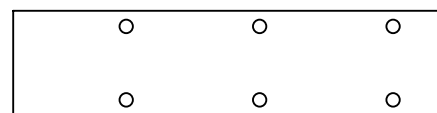
Tapped 117 mm -coex + coextruded seal
3 bars of 6 ml / pack
80 bars of 6 ml / container

AC114



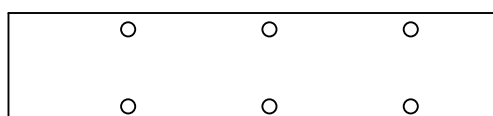
Tapped 127 mm - coex + coextruded seal
3 bars of 6 ml / pack
80 bars of 6 ml / container

AC115

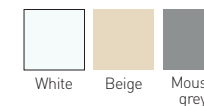


Tapped 137 mm - coex + coextruded seal
3 bars of 6 ml / pack
70 bars of 6 ml / container

AC116



**TAPPED INSERTS COLORS
MASS COLOURED**



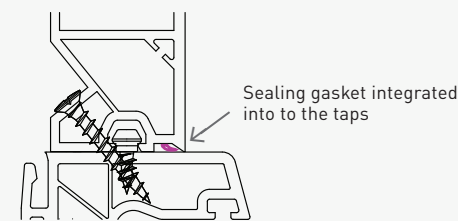
PLAXED



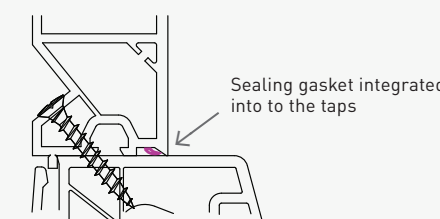
80+ plated film decors available on request

IMPLEMENTATION

SFS BLOCK SCREW
SPK/5-48/GS - 4 x 10

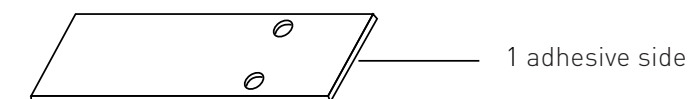


SFS SCREW
SPT/24-4,3 x 30 GS



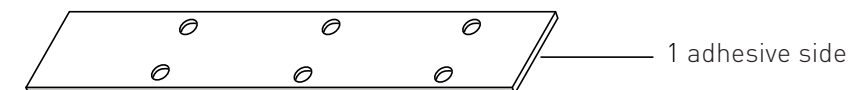
**THEY ARE ALWAYS AVAILABLE ON OFFER
SEALING PLATES**

AC009
for ME050JC, ME021JC, ME022JC ME023JCF and ME024JCF
Rolls 291 pieces / package



AC018
for ME025JCF, ME026JCF, ME027JCF, ME028JCF, ME029JCF,
ME030JCF, ME031JCF and ME032JCF

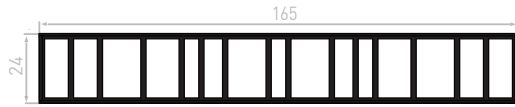
Rolls 291 pieces / package



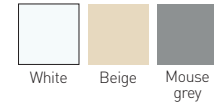
> TAPPED

ME080 
Tapped 165X24

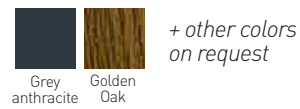
3 bars of 6 ml / pack
84 bars of 6 ml / container



COLORS
MASS COLOURED

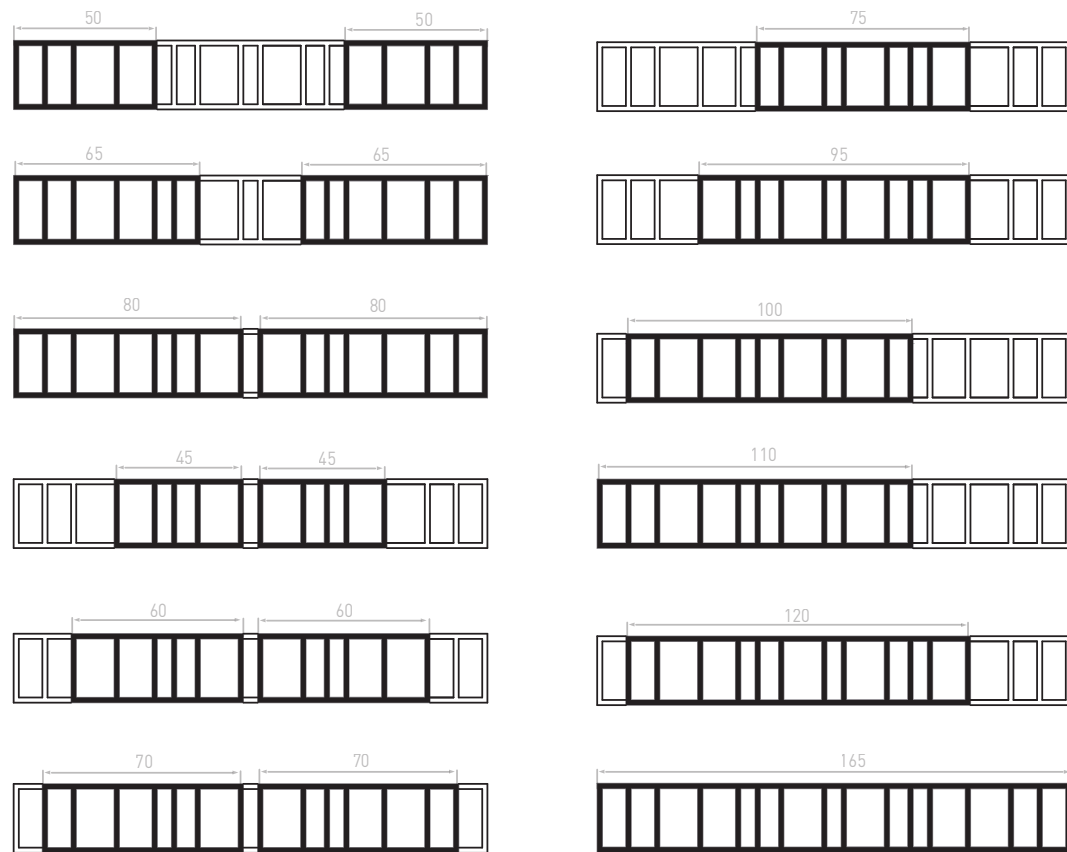


PLAXED



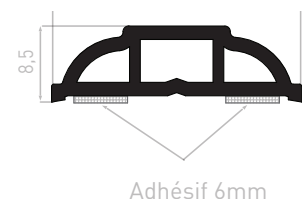
CONFIGURATIONS

Examples of possible edgings of the tapped **ME080**.

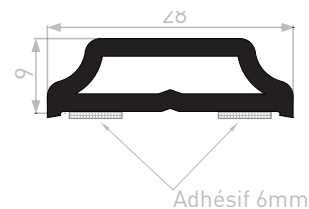


> GLAZING BARS

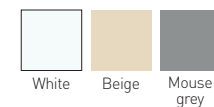
ME071B
Glazin bars 28X8,5 + adhesive strips 6 mm
20 bars of 6 ml / pack



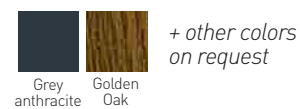
ME072B
Glazin bars 28X9 + adhesive strips 6 mm
20 bars of 6 ml / pack



COLORS
MASS COLOURED

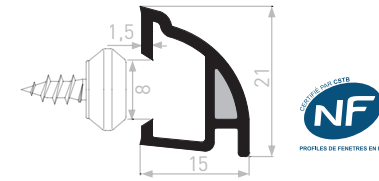


PLAXED



> DRAINAGE CHANNELS

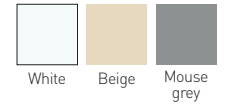
ME060
Ogee drainage channel clip-on
30 bars of 6 ml / pack
600 bars of 6 ml / container



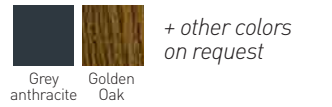
PIM002
Drainage channel end plate for ME060
500 pairs tied or separated / bag



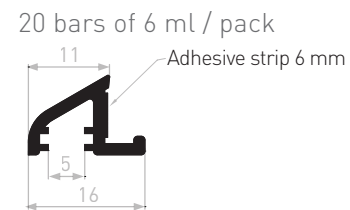
COLORS
MASS COLOURED



PLAXED



ME061A*
Door sill drainage channel
+ adhesive strip 6 mm



*Minimum order required 600 ml

COLORS
MASS TINTED



SCREW FASTENING

The **ME060** drainage channel is fastened using an SFS block screw, reference: SPF/5-84/GS

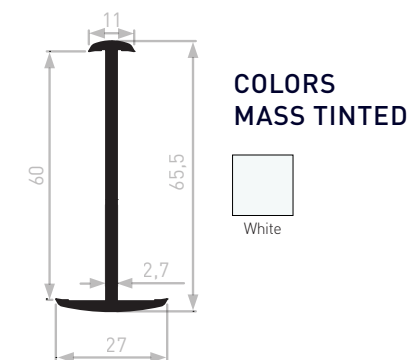
CERTIFICATE (NF)126

To receive the NF certificate for the **ME060** profile, please contact our customer service department : commercial@geplast.fr

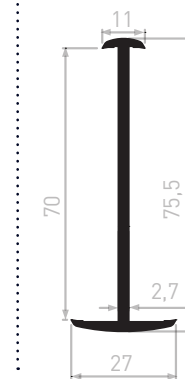
> CONNECTING PROFILES

*Minimum order required 360 ml

ME065*
Connecting profile 60 mm
10 bars of 6 ml / pack



ME069*
Connecting profile 70 mm
10 bars of 6 ml / pack



ME068*
Connecting profile 71 mm
10 bars of 6 ml / pack

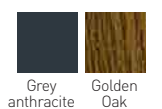


COLORS
MASS COLOURED



Mouse grey

PLAXED

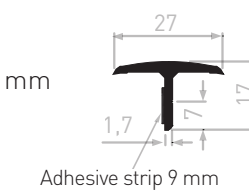


80+ plated film decors available upon request

The **ME065** and **ME068** profiles are coated on 1 or 2 sides, as you prefer.

> JOINT COVER

ME066A*
joint cover 27 mm + adhesive strip 9 mm
30 bars of 6 ml / pack
800 bars of 6 ml / container



*Minimum order required 720 ml

COLORS
MASS COLOURED

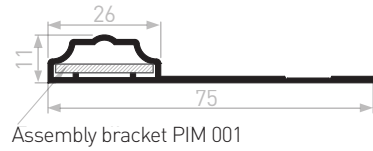


> TRIM MOULDINGS

AB001

Window trim

10 bars of 6 ml / pack
10 bars of 6 ml / pack

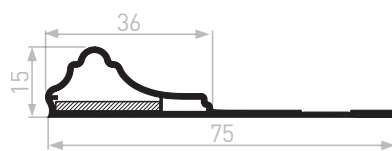


Assembly bracket PIM 001

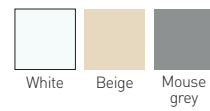
AB003

Moulded window trim

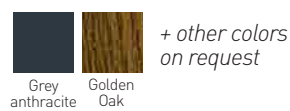
10 bars of 6 ml / pack
10 bars of 6 ml / pack



COLORS MASS COLOURED



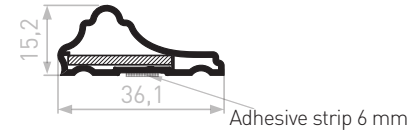
PLAXED



AB004A

Glued moulded trim
+ adhesive strip 6 mm

10 bars of 6 ml / pack
10 bars of 6 ml / pack
400 bars of 6 ml / container

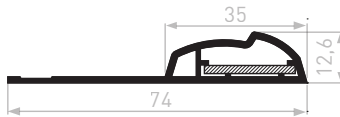


Adhesive strip 6 mm

AB008

Moulded trim

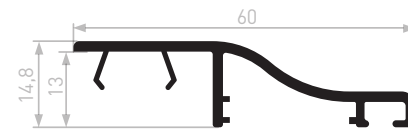
10 bars of 6 ml / pack
500 bars of 6 ml / pack



AB021

Trim moulding for 13 mm fin
compatible with VEKA

10 bars of 6 ml / pack
500 bars of 6 ml / pack



> ASSEMBLY BRACKET

PIM001

Black angle bracket

100 parts / bag



> ANGLE COVER

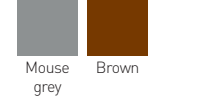
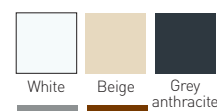
PIM011

Angle cover for AB021

200 parts / bag



COLORS MASS COLOURED

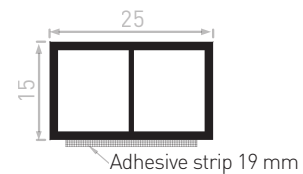


> COMPENSATION BLOCKS

ME085A

Compensation blocks 25 x 15
+ adhesive strips 19 mm

20 bars of 6 ml / pack
700 bars of 6 ml / container

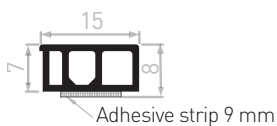


Adhesive strip 19 mm

ME086A

Compensation blocks 15X8
+ adhesive strips 9 mm

20 bars of 6 ml / pack
700 bars of 6 ml / container

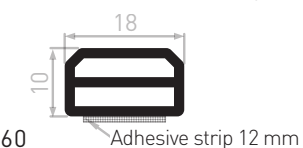


Adhesive strip 9 mm

ME088A

Compensation blocks 18X10
+ adhesive strips 12 mm

700 bars of 6 ml / pack

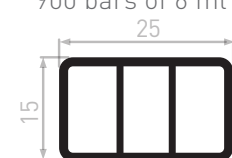


Adhesive strip 12 mm

ME089

Filler tube 25 x 15

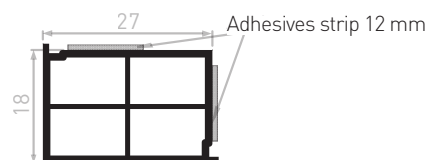
20 bars of 6 ml / pack
900 bars of 6 ml / container



ME087B

Compensation blocks 27X18
+ 2 adhesives strips 12 mm

20 bars of 6 ml / pack
540 bars of 6 ml / container

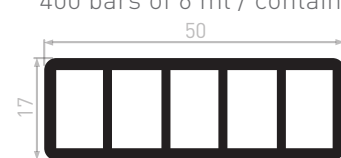


Adhesives strip 12 mm

DI016

Support wedge 50 x 17

10 bars of 6 ml / pack
400 bars of 6 ml / container



> STIFFENERS

DI018/A

Flat section 50 x 5
+ adhesive strip 19 mm (option)

10 bars of 6 ml / pack



DI019/A

Flat section 23 x 6 + adhesive
strip 9 mm (option)

20 bars of 6 ml / pack



DI023

Flat section 23 x 8

15 bars of 6 ml / pack

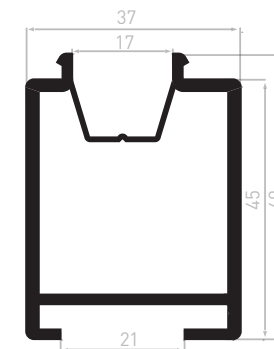


> TRANSPORT BLOCKS

DI010

Transport block 37X49-PL
250 mm clip-on

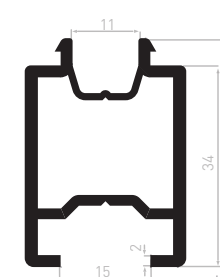
100 units / pallet



DI031

15 mm groove clip-on
Available lengths:
200 - 250 mm

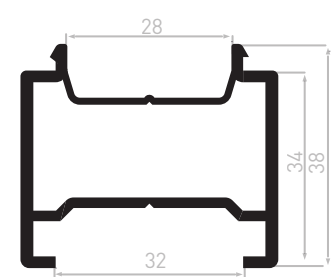
2 500 units / pallet



DI032

32 mm groove clip-on
Available lengths :
200 - 250 mm

2 500 units / pallet

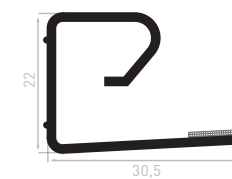


DI001/A

Transport block 30,5X22

Available lengths :
120 mm - 200 mm - 250 mm
+ adhesive strip 6 mm (option)

20 bars of 6 ml / pack
according to length

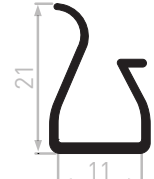


DI004

Transport block 21x11

Available lengths:
125 mm - 250 mm
335 mm - 500 mm

20 bars of 6 ml / pack
according to length

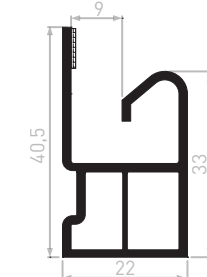


DI013A

Protective block 40X22

Available lengths :
200 mm - 250 mm
+ adhesive strip 6 mm

20 bars of 6 ml / pack
according to length

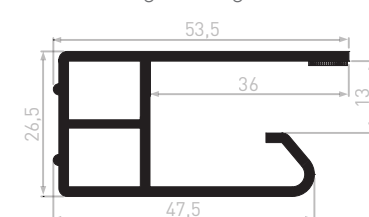


DI027A

Transport block 54X26

Available lengths :
200 mm - 250 mm
+ adhesive strip 6 mm

20 bars of 6 ml / pack
according to length

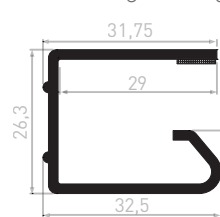


DI028A

Transport block 32X26

Available lengths:
125 mm - 200 mm - 250 mm - 300 mm
+ 2 adhesives strip 6 mm

20 bars of 6 ml / pack
according to length



I – SCOPE OF APPLICATION

Sales by the company GEPLAST (hereinafter 'our Company' or 'us') are subject to these general terms & conditions, which the customer undertakes to fulfil unreservedly and which take precedence over any purchasing condition and any contrary clause stated in the customer's documents, unless formally and expressly waived by us.

No delay or omission by us at any given time in exercising any of these conditions may be interpreted as a waiver to us imposing the aforesaid condition. If one of the conditions specified herein were to be cancelled or rendered unenforceable upon the customer, in whole or in part, the customer would remain bound by all the other conditions.

II – FORMATION OF THE CONTRACT

Any order received from the customer, whether a proposal or a quotation issued by our company, must be the subject of an order confirmation from us, materialized by the dispatch to the customer of an acknowledgement of receipt of order (or "ARC"). If no reservation is received from the customer within 48 working hours of the dispatch of this order confirmation (ARC), the order is deemed to have been accepted, firm and definitive. The order is then irrevocable, and production begins.

This order confirmation (ARC) is binding for both us and the customer, and is authoritative in the event of any subsequent dispute. Only the order confirmation (ARC) accepted by both parties may deviate from these general terms and conditions. In the event of contradiction with the order confirmation (ARC), only the latter shall prevail.

Our plans, drawings, studies, photos, brochures, catalogs, etc., remain our entire property.

III – DELIVERY – LEAD TIMES

Unless otherwise stated in our order confirmation, delivery lead times are for guidance only and are not guaranteed. Neither compensation nor contract cancellation shall be granted in the event of delay.

However, in the event of a delay exceeding 8 weeks beyond the guide delivery date, not attributable to a *force majeure* event, the customer may ask to cancel the sale, without penalty to either party, after serving notice without effect. Deposits paid shall be returned to the customer within eight days.

The customer accepts that the products ordered should be delivered in full, or only partially subject to having been duly notified in advance.

In any event, the order can only be fulfilled if the customer is up-to-date with its obligations towards our Company.

IV – DELIVERY – TRANSFER OF RISKS – RETURNS

The delivery of our goods and their packaging materials is considered to take place in our warehouses. Risks are transferred to the customer once the goods are collected.

The customer has a time limit of 10 days after the goods are made available to be taken into the customer's possession. Beyond this deadline, the risks will be transferred to the customer, who will be liable to pay penalty storage fees equivalent to 1% of the price of the goods, per day of delay, without prejudice to other justified damages and interest.

Upon receipt, the customer or its representative is required to check the goods delivered against the order and to verify their condition.

Our Company waives all liability for errors in quantity, visible damage or defects observed after the delivery note and/or consignment note has been signed.

Defects in part of the delivery are not grounds to reject it in full.

Other than for errors compared to the order or acknowledged defects, the products may not be taken back. No product may be sent back without our prior written consent and our return shipping instructions.

For profiles delivered in metal containers, it should be noted that the containers remain the non-transferable property of our Company and must be returned to us. If not returned, the customer will be invoiced for the cost of the containers (€350 ex VAT each).

V – TRANSPORT

Unless otherwise agreed, the customer is responsible for transport of the goods.

If we provide the transport or assign it to a third-party carrier, it is expressly agreed that this is at the customer's request and risk, including when the price is specified as 'free delivery'. It is therefore the customer's responsibility to take any necessary measures in the event of damaged or missing items, in accordance with the

provisions of articles L. 133-3 *et sequor* of the French Commercial Code.

Unless formally and expressly waived by us, no clause may be considered as waiving the aforementioned rules.

VI – GUARANTEE – LIABILITY

In accordance with articles 1641 *et sequor* of the French Civil Code, our products carry the legal guarantee for hidden defects, as well as for visible defects as soon as, in the latter case, these visible defects have been reported by the customer or its representative upon receipt.

For third-party products incorporated into our own products, our Company can agree no greater guarantee than that due from and granted by the suppliers and manufacturers of the aforesaid third-party products.

In all cases, if the non-compliance or defect is acknowledged, our Company's liability shall be limited, at our discretion, either to exchanging or repairing the non-compliant or faulty product or component, or to refunding the order, to the exclusion of any compensation or damages, for any reason whatsoever, particularly for the costs of labor, dismantling, refitting, immobilization or transport, etc.

The guarantee does not apply when the conditions of storage or installation do not follow best practice, or are inappropriate or contrary to our guidelines, in the event of negligence, incorrect cleaning and inappropriate or non-compliant use of our products.

VII – PRICE – PAYMENT TERMS

Our prices are listed excluding VAT and excluding packaging, and our goods are always invoiced at the price in force on the day of the order confirmation (ARC); VAT is added at the rate in force on the invoice date. Payment costs such as transfer fees, conversion fees, customs fees, etc. are to be paid by the customer

Invoices are payable to our head office 30 days net of shipping, unless otherwise expressly agreed by us. If an order is fulfilled in several deliveries, the invoices relating to each delivery are payable as they are issued without waiting for the entire order to be fulfilled.

In addition, in accordance with the provisions of article L. 441-10 of the French Commercial Code, any delay in payment or any extension of the deadline entails *ipso jure* the application of late-payment interest calculated *prorata*, equal to the interest rate applied by the European Central Bank to its most recent refinancing operation increased by 10 percentage points.

Furthermore, any delay in payment not authorized by our Company results in liability, under a penalty clause for late payment, for fixed compensation set at 10% of the price, as well as payment of the fixed debt recovery allowance of €40 specified in article L. 441-10 of the French Commercial Code, which may be increased by the actually recovery expenses incurred (if greater than the fixed fee).

VIII – OUTSTANDING PAYMENTS – DEFEASANCE CLAUSE

In the event of failure to pay, forty-eight hours after serving notice without effect, the sale will be cancelled *ipso jure* if we so wish and our Company may seek to have the products returned, without prejudice to any other damages. Cancellation will affect not only the order in question but also all prior unpaid orders, whether they have been or are being delivered and whether or not payment is outstanding.

For payment by bill of exchange, failure to return the bill will be considered as a dishonored bill, comparable to a default of payment. Similarly, when payment is staggered, failure to pay a single instalment will result in immediate liability for the whole debt without notice being served.

In all the above cases, the sums that would be due for other deliveries or for any other reason will immediately become due if our Company does not opt to cancel the corresponding orders. Our Company may also, if it wishes, suspend fulfilment of any current order.

IX – DETERIORATION IN THE CUSTOMER'S SOLVENCY OR FINANCIAL POSITION

If the customer's solvency or financial position deteriorates, we may, at our discretion, either cancel the order or demand payment or demand additional guarantees. In the event that joint proceedings are taken against the purchaser, we will be able to cancel the order insofar as this is permitted by local law applicable to these proceedings.

X – FORCE MAJEURE – UNFORESEEN EVENTS

Any *force majeure* event will result *ipso jure* in suspension of deadlines for fulfilling our commitments and will give us the option, as applicable, to cancel them.

Under no circumstances may we be held liable if a *force majeure* event makes it impossible for us to deliver or fulfil the order.

Force majeure, in particular as understood in relation to these terms & conditions,

The future takes shape together

include but are not limited to: pandemic, war, mobilization, general or partial strike, lock-out, delay by our suppliers, machine failure, procurement problems for raw

materials, components, equipment or power, fire or any other event over which we have no control, such as to prevent or reduce manufacturing or deliveries.

In the event of a significant modification to the economic conditions in force when we accepted an order, such as to make fulfilment excessively costly for us (particularly the price of the raw material), we reserve the right to negotiate the terms of this order and to cancel it if it is impossible to reach agreement.

XI – COMPLIANCE WITH OUR RECOMMENDATIONS

Correct use of the products sold by our Company requires our recommendations to be strictly followed, in particular for selection, storage, installation, use and cleaning as specified in our manuals, guides, specifications, catalogues, maintenance sheets and other technical documents.

These documents can be freely viewed on our internet site www.geplast.fr

These documents can also be handed to the customer on request.

The customer undertakes to bring them to the attention of intermediate and end users.

In any event, the customer undertakes not to make any use or take any action with the products sold without first inquiring about any recommendations regarding the aforesaid products. Failure to follow these recommendations rules out any replacement, repair, refund or compensation of any kind.

In particular, these recommendations include, but are not limited to, the following and are no substitute for carefully reading and closely following the technical documents relating to each product and, if in doubt, first referring back to our Company:

Confirm the compatibility and suitability of the products for the customer's needs

The customer has a duty to confirm the suitability of our products and their technical features for their needs, expectations and uses they plan to make of them.

In the event it is planned to use our products in combination or incorporated with other products for which we have not previously guaranteed compatibility, whether these products come from our Company or third-parties, it is the customer's responsibility first to ensure the suitability and compatibility of the products with each other and more generally the technical feasibility of operation under reasonable conditions.

Confirm the condition of the products before use and commissioning test

The products sold by our Company, whether made from synthetic material (e.g. PVC or ABS) or plant-based/hybrid material (e.g. the Loryza range), may have small manufacturing differences, particularly in their appearance (colour differences, material imperfections, etc.) and small differences in length.

If the products are intended for a specific use, the customer should first perform tests.

Storage and cleaning conditions for the products

Products must be stored and cleaned under normal and usual conditions ensuring they retain their structure, properties and appearance, in particular with regard to unforeseen climatic, atmospheric, temperature, light or other conditions, irrespective of their source, and in all cases complying with our specific recommendations, where they exist. In general, the products must be stored out of sunlight, bad weather and moisture.

In particular, for storage, the products should be stacked on a dry flat surface, in a cool and well-ventilated place, out of the light, so as not to be distorted or discolored.

Profiles made of 100% PVC should be cleaned using warm soapy water with a soft non-abrasive sponge and rinsed with clean water. No solvent, acid, acetone-based or chlorinated product should be used. For storage, cardboard kits such as packs should be laid on a dry flat surface, in a well-ventilated place, to avoid distortion.

XII – ADVERTISING RIGHT

Any use by the customer of one of our trademarks or company name will be subject to our prior written agreement.

XIII – PERSONAL DATA

In the context of contractual relations with the customer, our Company employs computerized systems making it easier to manage the customer's order, to meet legal or regulatory obligations and to send sales documents to the customer. Some of the data collected in this way, required to agree or fulfil the contract(s), may relate to one or more identified or identifiable natural persons acting in their professional capacity. In this case they meet the qualification for personal data in the meaning of current national and European regulations. Our Company is then considered as the Data Controller.

In doing so, our Company undertakes under all circumstances to comply with the regulations applicable to processing personal data, and particularly Regulation (EU) 2016/679 of the European Parliament and of the Council of 27 April 2016 applicable with effect from 25 May 2018 (hereinafter 'GDPR') and French law⁷⁸⁻¹⁷ of 6 January 1978 on data processing, files and freedoms.

Our Company also undertakes only to involve or work with contractors or partners that also comply with them.

In compliance with the regulations, these data are stored for the duration of the commercial relationship between our Company and the customer, then for a period of 3 years following its end, for statistical purposes, without prejudice to any legal or regulatory obligations for data archiving when they exist and storage made necessary to establish proof of a right or a contract that can be archived in accordance with the provisions of the French Commercial Code.

In any event, natural persons affected by processing of data about them have a right of access, rectification, erasure, restriction of processing, opposition or data portability, the right not to be affected by automated decision-making (including profiling) and a right of appeal to the CNIL (French data protection commission).

XIV – RETENTION OF OWNERSHIP

PRODUCTS SOLD REMAIN OUR PROPERTY UNTIL EFFECTIVE PAYMENT OF THE ENTIRE PRINCIPAL AND INCIDENTAL PRICE. IN THIS RESPECT, PROVIDING A BILL OF EXCHANGE OR ANY OTHER SECURITY CREATING AN OBLIGATION TO PAY DOES NOT CONSTITUTE PAYMENT IN THE MEANING OF THIS CLAUSE.

FAILURE TO PAY ANY OF THE INSTALMENTS MAY RESULT IN DEMANDS TO RETURN THE PRODUCTS. CUSTOMER UNDERTAKES, UNTIL PAYMENT OF THE FULL PRICE AND SUBJECT TO AN IMMEDIATE DEMAND BY OUR COMPANY TO RETURN THE PRODUCTS, NOT TO TRANSFORM NOR INCORPORATE THE AFORESAID PRODUCTS, NOR TO RESELL THEM OR PAWN THEM.

IN ANY EVENT, THE PRODUCTS STILL IN THE CUSTOMER'S POSSESSION ARE CONSIDERED TO BE THOSE FOR WHICH PAYMENT IS OUTSTANDING.

THE CUSTOMER ALSO UNDERTAKES TO NOTIFY US IMMEDIATELY OF ITS SUSPENSION OF PAYMENTS, OR TO SUBMIT ITSELF OR BE SUBJECT TO JOINT PROCEEDINGS FOR RECEIVERSHIP OR COURT-SUPERVISED WINDING UP ON REPORT OF EXISTENCE IN ITS STOCK OF UNPAID GOODS BELONGING TO US AND TO SUPPLY US ANY INFORMATION ENABLING US TO DEMAND THE RETURN OF GOODS FROM SUBSEQUENT PURCHASERS.

THESE MEASURES ARE NO OBSTACLE TO TRANSFER TO THE CUSTOMER, AT DELIVERY, THE RISKS OF LOSS OR DAMAGE OF THE PRODUCTS SOLD, AS WELL AS DAMAGE THAT THEY COULD CAUSE.

XV – APPLICABLE LAW – SETTLEMENT OF DISPUTES

ALL DISPUTES RELATING TO OUR SALES AND TO FULFILMENT OR INTERPRETATION OF OUR GENERAL TERMS & CONDITIONS OF SALE ARE SUBJECT TO FRENCH LAW AND WILL BE SOLE JURISDICTION OF THE NANTES (FRANCE) COMMERCIAL COURT, EVEN FOR A GUARANTEE CLAIM OR WHERE THERE ARE MULTIPLE DEFENDANTS.

Date :

Last name, First name:

Signature preceded by the mention "Read and approved"



GEPLAST

Building

GO TO
WWW.GEPLAST.FR

GEPLAST SAS
Z.I. Actipôle Nord 249
6, rue de Beauséjour
Saint-André-de-la-Marche
49450 SÈVREMOINE
Phone : 02.41.49.80.90
Fax : 02.41.46.42.07

Non-contractual document. We reserve the right, at any time and in order to improve our profiles, to make any modifications we consider necessary.