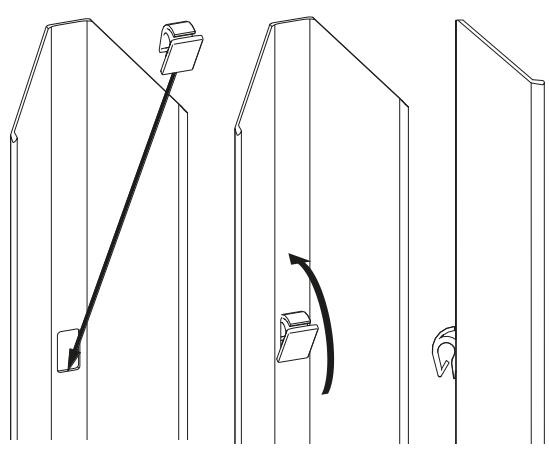




## INSTALLATION INSTRUCTIONS

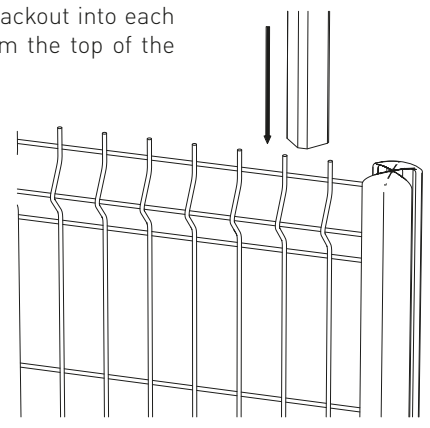
### 1. INSERT THE CLIPS

Insert a clip on each blackout

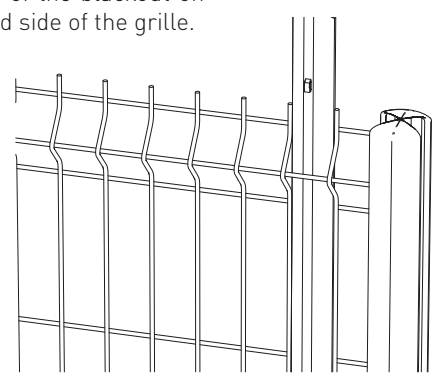


### 2. INSERT THE BLINDS

Slide a blackout into each mesh from the top of the grid.

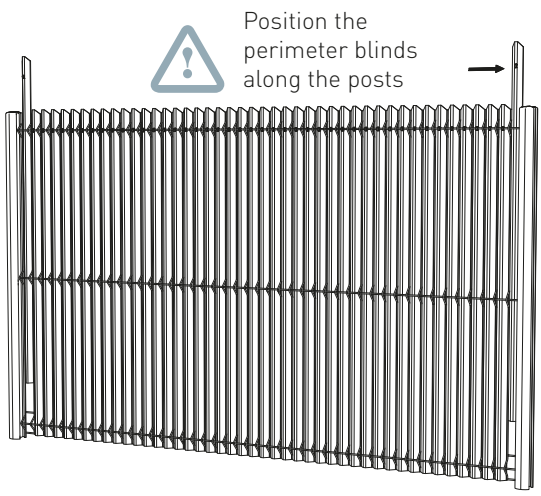


Flat face of the blackout on the folded side of the grille.



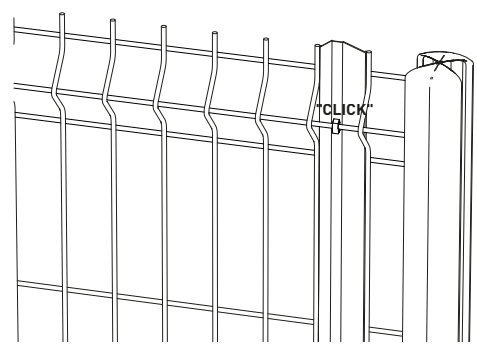
### 3. FILL IN THE GRID

Complete the filling of the grille by repeating the operations for inserting the blinds.



Position the perimeter blinds along the posts

Lower the blackout until the clip locks into the mesh wire.



*Given the diversity of mesh panels on the market and the unspecified conditions of use of our blackouts, technical validation of the product is the responsibility of the purchaser and user.*

*For further information, please contact our sales department.*