



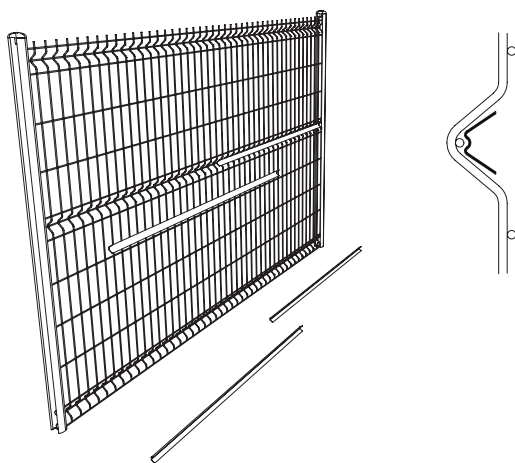
ORYZON  
COLLECTION

## INSTALLATION INSTRUCTIONS



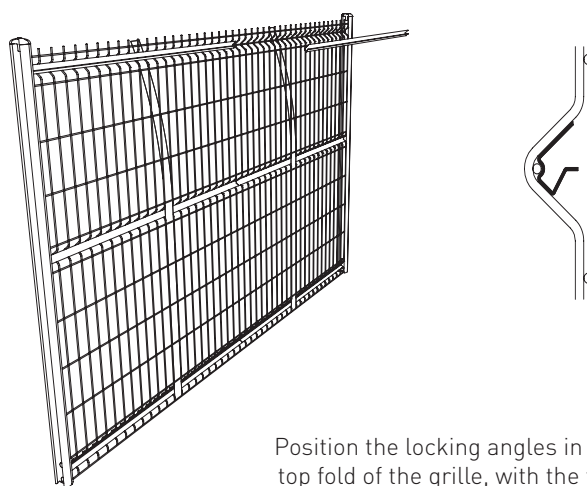
To see the  
installation  
video, scan the  
QR Code

### 1. POSITION THE REINFORCING ANGLES



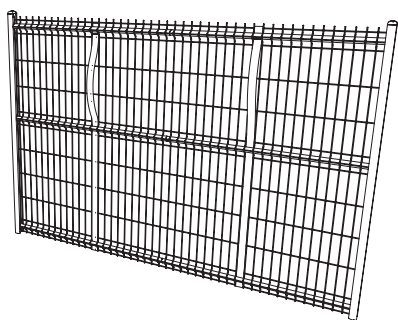
Position the reinforcing angles in the bottom and middle folds of the grille. Hold them in place by slipping a blackout slat between each length of angle and the horizontal wires.

### 2. POSITION THE LOCKING ANGLES

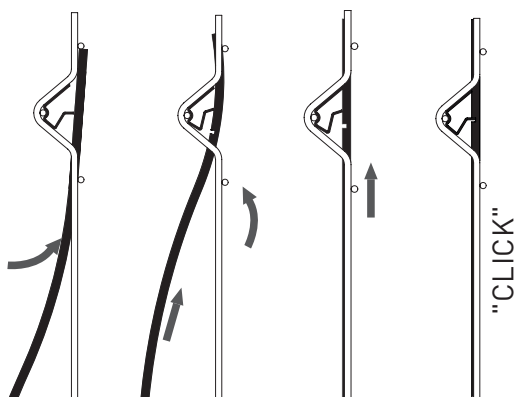


Position the locking angles in the top fold of the grille, with the tab at the bottom.

### 3. INSERT PRIVACY SLATS

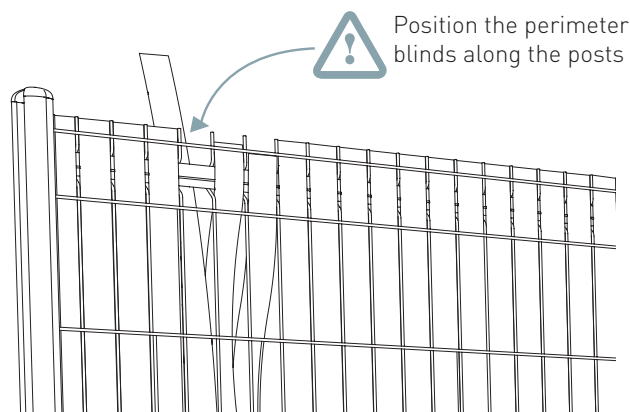


Once the angles are in position, insert the top of the blinds between the locking angle and the horizontal wires, bending them until they lock into place.



### 4. FILL IN THE GRID

Finish filling the grid by repeating the operations of inserting the blinds in the intermediate folds, at the bottom, then at the top by bending.



Option: Position the finishing profile at the top of the panel

*Given the diversity of mesh panels on the market and the unspecified conditions of use of our blackouts, technical validation of the product is the responsibility of the purchaser and user.*

*For further information, please contact our sales department.*