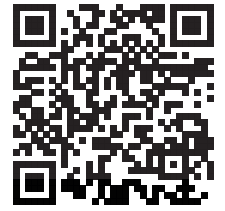


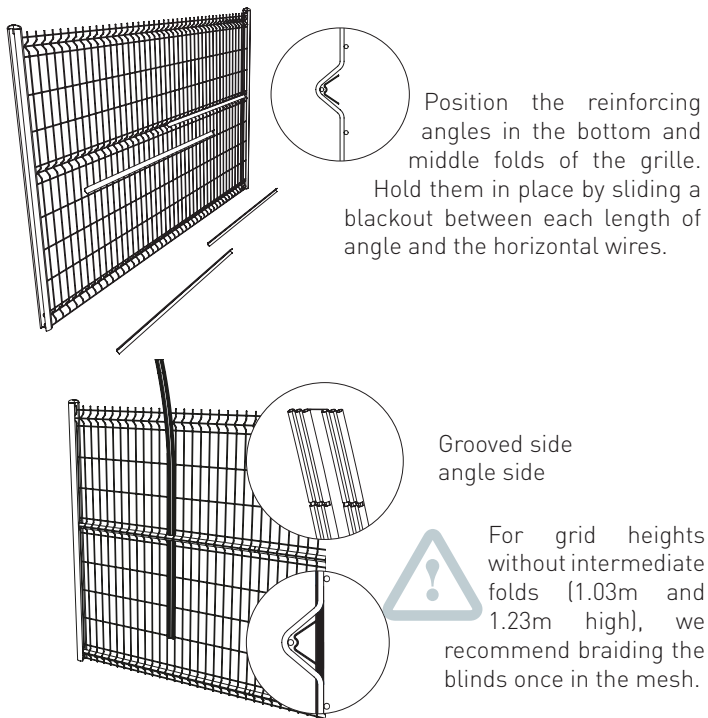


INSTALLATION INSTRUCTIONS

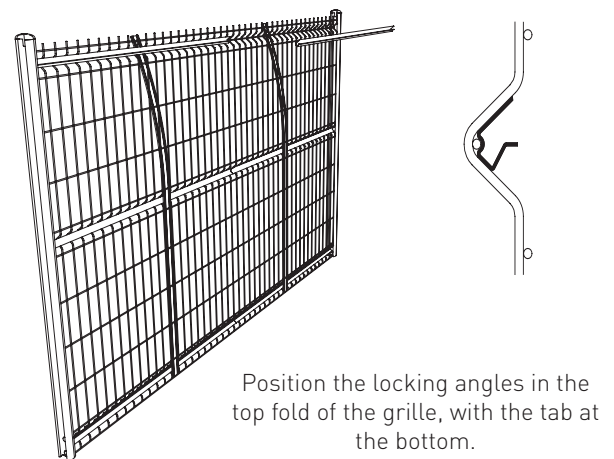


To see the assembly installation, scan the QR Code

1. POSITION THE REINFORCING ANGLES

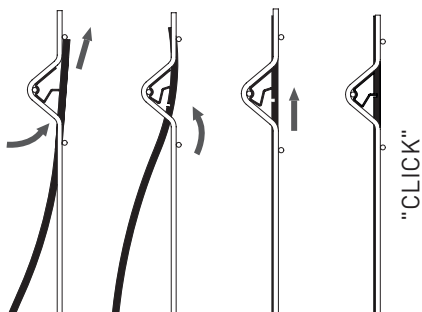
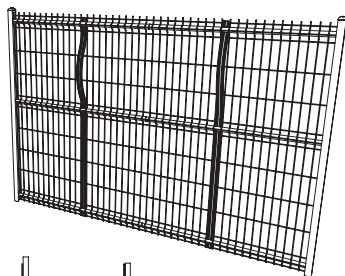


2. POSITION THE LOCKING ANGLES



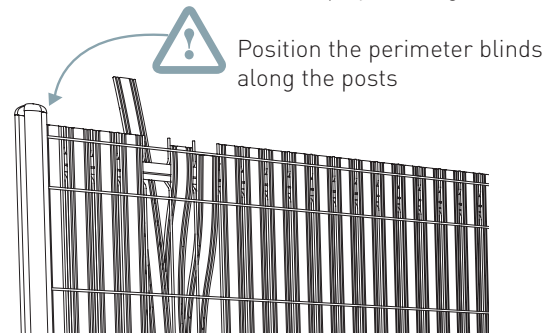
3. INSERT PRIVACY SLATS

Once the angles are in position, insert the top of the blinds between the locking angle and the horizontal wires, bending them until they click onto the tongue.



4. FILL IN THE GRID

Finish filling the grid by repeating the operations of inserting the blinds in the intermediate folds, at the bottom, then at the top by bending.



Option: Position the finishing profile at the top of the panel

Given the diversity of mesh panels on the market and the unspecified conditions of use of our blackouts, technical validation of the product is the responsibility of the purchaser and user.

For further information, please contact our sales department.